



# Roland Park Country School

## Academic Profile 2011-2012

5204 Roland Avenue  
Baltimore, Maryland 21210-1996  
PHONE: 410-323-5500  
FAX: 410-323-2164  
www.rpcs.org  
CEEB # 210-180

**Leigh Martin Lowe**

Director of College Counseling  
lowel@rpcs.org

**Janet E. Weller**

Associate Director of College Counseling  
wellerj@rpcs.org

**Ron Pringle**

College Counseling Assistant  
pringler@rpcs.org

**Jean Waller Brune**, Head of School  
**Ereni Malfa**, Head of Upper School

**PHILOSOPHY** Roland Park Country School, a K-12 college preparatory school for girls, is dedicated to the intellectual, aesthetic, physical and moral development of its students. While maintaining high academic standards, the school upholds tradition and promotes innovation. The school encourages self-discipline, independence of thought, tenacity of purpose, creativity, and spiritual well-being. It fosters personal integrity, respect for others, an appreciation of diversity, and a cooperative, resilient spirit.

Roland Park Country School values the friendly atmosphere of mutual trust inherent in an inclusive community. The school strives to instill in its students a lifelong love of learning as well as the motivation to look within and beyond themselves in order to become responsible, contributing members and leaders of their communities.

**THE SCHOOL** Founded in 1901, RPCS is an independent day school for girls in kindergarten through grade twelve. The school is located in Roland Park, a residential neighborhood in northern Baltimore City, on a 21 acre campus. The college preparatory curriculum emphasizes the intellectual, aesthetic, physical, and moral development of the students. RPCS welcomes applicants of all races, religions and ethnic origins and does not discriminate on the basis of race, religion, sexual orientation or ethnic origins in the administration of its policies and programs. RPCS is accredited by the Association of Independent Maryland Schools and is a member of the National Association of Independent Schools. The School is the first girls' school in Maryland to be awarded a chapter in the Cum Laude Society.

**ENROLLMENT and FACULTY** Total—661. Upper School—286. Senior Class—62. Upper School Faculty—57 (Average teaching experience is 15 years, with 92% holding post-bachelor's degrees). Upper School Student/Faculty Ratio—5:1.

**ACADEMIC REQUIREMENTS and CURRICULUM** RPCS offers a rigorous, college preparatory curriculum. The standard and expected academic load of every student is five "major" courses each year. To satisfy graduation requirements, a student must complete:

- English—4 years
- Mathematics—4 years (at least through Pre-Calculus)
- Laboratory Science—3 years (to include Physics, Chemistry and Biology)
- History—3 years (to include Non-Western World, European, and United States)
- Foreign Language—3 years (of the same language)

Additional courses in art, music, theater, public speaking, and physical education are also required.

**ADVANCED PLACEMENT** In 2010, 129 students sat for 358 AP examinations for which 84% earned scores of 3 or above. Year-long Advanced Placement courses are offered in:

Biology	Environmental Science	Physics
AB and BC Calculus	European History	Psychology
Chemistry	French Language	Russian (AP Prototype)
Chinese	Government	Spanish Language
Computer Science	History of Art	Spanish Literature
Economics	Latin	Statistics
English Language	Music Theory	Studio Art
English Literature	Photography	US History

**STUDENTS EARNING AP EXCELLENCE IN GRADES 9-12**

- AP Scholars** (≥3 on three or more exams): 23
- AP Scholars with Honors** (≥3 on four or more exams): 9
- AP Scholars with Distinction** (≥3 on five or more exams): 8

**Students are limited to taking no more than three AP classes in any one year** without specific permission of the Upper School Head. In addition to APs, the School offers coordinate courses with Gilman and Bryn Mawr Schools for foreign languages, 11th grade English, US History and senior electives.

**CLASS RANK** Roland Park Country School policy prohibits specific ranking, therefore we use no form of class rank.

## GRADING SYSTEM

Honor Roll gives recognition to those students who have attained an average of 87% or higher.

The School's passing mark is 65.

Grade equivalents are as follows:

A	100—90
B	89—80
C	79—70
D	69—65
F	Below 65

## THE INTEGRATED MATH PROGRAM

The Integrated Math Program at Roland Park Country School is a three-year sequence that intends to prepare students for the study of college-level mathematics as seniors. The sequence provides students with learning experiences equivalent to traditional courses in Geometry, Algebra II, Trigonometry, and Pre-Calculus. In addition, the sequence provides students with significant experience in Probability, Statistics, and Data Analysis and includes technology and writing components. At the end of the sequence, students choose from AP Calculus (AB or BC), AP Statistics, or a wide variety of rigorous non-AP options, including courses in calculus, finite and discrete mathematics, and multivariate and college algebra.

## TECHNOLOGY

The use of technology is an integral part of the School's commitment to providing a superior education for girls. To that extent, Roland Park Country School is a laptop school. All students in grades 7 - 12 purchase their own laptops through the School, which they use in all classrooms, in science labs, in the library, and for homework. Graduates are highly skilled in using the internet appropriately as a research tool, designing spreadsheets, power point presentations, virtual labs, graphing, note taking, and communicating with faculty through their web pages and email. The use of laptops gives all students the flexible resources they need, when they need them, empowering them to become active participants in their learning.

## MOST ADVANCED COURSE OFFERINGS

In addition to standard college preparatory sections, our curriculum offers **regular**, **Accelerated (A)**, **Honors (H)**, and **Advanced Placement (AP)** sections as follows:

	Grade 9	Grade 10	Grade 11	Grade 12
English	H	H	AP	Electives
Foreign Language	H	H	AP	AP
Mathematics	A, H	A, H	A, H	H, AP
History	H	AP	AP	H, AP
Science	H	H	H	AP

## COMMUNITY SERVICE

RPCS places emphasis on the developmental ideals associated with volunteerism and helping others. Every student is required to devote a minimum of 60 hours to community service, 40 hours of which must be at one location during her four years in the Upper School. Most of our students far surpass this minimum.

## STUDENT LEADERSHIP

**Leadership positions are limited** as follows: In any one year, a student may be the sole President of one organization or Co-President of two. In addition, a student may repeat as class President only from junior year into senior year.

## SIX-SEMESTER CUMULATIVE GPA, CLASS OF 2012:

The cumulative GPA is weighted and includes all graded courses. Weighted grades are reflected on the transcript with an additional four points given for AP, three points for Honors, and two points for Accelerated classes.

**Full Range of Class:** 96.36—76.87

**Mean:** 86.19

## SCHEDULE

Courses are blocked for 70-minute class periods in a ten-day cycle. Classes meet according to the following frequency pattern (levels of credit are noted in italics):

### *Full Credit:*

#### 9th and 10th Grade

English and Foreign Language      5 out of every 10 days  
Math, Science and History          6 out of every 10 days

#### 11th and 12th Grade

Non-AP Classes      6 out of every 10 days  
AP Classes          7 out of every 10 days

*Half-Credit:*      5 or 6 out of every 10 days

*Quarter-Credit:*      3 out of every 10 days

100% of Roland Park Country School's graduates over the past five years have matriculated to four-year colleges and universities.

The Class of 2011 applied to an average of 6 colleges each.

# PROFILE OF THE CLASS OF 2012

## JUNIOR YEAR GRADE DISTRIBUTION FOR CLASS OF 2012:

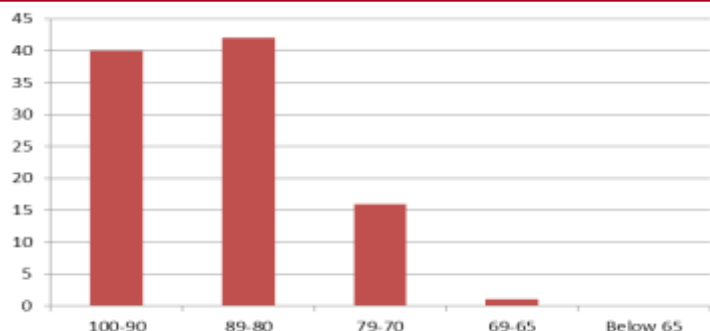
SUBJECT	100-90	89-80	79-70	69-65	Below 65	TOTAL
English 11	11	24	4	0	0	39
English 11 (AP)	18	5	0	0	0	23
Trig - Calculus (H)	7	5	1	0	0	13
Algebra II—Geometry II	0	2	2	0	0	4
Algebra/Trigonometry (A)	3	4	5	0	0	13
Pre-Calculus (A)	7	15	7	0	0	29
U.S. History	5	15	14	1	0	35
U.S. History (AP)	14	10	0	0	0	24
Chemistry	2	17	8	1	0	28
Chemistry (H)	15	13	1	0	0	29
Spanish Language (AP)	6	1	0	0	0	7
Spanish IV	10	2	0	0	0	12
Spanish III	5	4	5	0	0	14
French Language (AP)	3	1	0	0	0	4
French IV	1	2	1	1	0	5
French III	0	2	0	0	0	2
Russian III	4	3	0	0	0	7
Latin IV	2	2	1	0	0	5
Latin—Vergil (AP)	1	1	0	0	0	2

\* Courses enrolling fewer than two Roland Park students are not distributed

### PERCENT GRADE DISTRIBUTION

The accompanying grade distribution graphic represents the percent of final grades, earned by the Class of 2012 during their junior year, that fall into each of the bracketed distribution areas.

- 40% of the grades earned fell between 90-100
- 42% of the grades earned fell between 80-89
- 16% of the grades earned fell between 70-79
- 1% of the grades earned fell between 60-65
- 0% of the grades earned fell below 65



### CLASS OF 2012 STANDARDIZED TEST RESULTS

The following numbers represent the SAT Reasoning Test and ACT Exam testing summary through the June 2011 test administration.

Test	Mean	Mid 50% Range
SAT I Verbal/CR	593	540-650
SAT I Math	612	560-660
SAT I Writing	623	560-690
SAT I Total	1828	1660-2000
ACT Composite	27.9	23—27

### CLASS OF 2012 SAT II SUBJECT TEST RESULTS

The following numbers represent the testing summary for those members of the class who sat for the SAT II Subject Tests, through the June 2011 test administration.

Subject	Mean	# of Students
Chemistry	683	3
Literature	622	20
Math I	601	19
Math II	688	11
US History	642	18
French	590	2
Spanish	628	4

# THREE YEAR SURVEY OF COLLEGE ACCEPTANCES

University of Alabama*	Elizabethtown College	University of MA, Amherst	Savannah Coll. of Art & Des.
American Acad. of Dramatic Arts	Elon University**	McDaniel College	Sch. of the Art Inst. of Chicago*
American University	Emerson College*	McGill University	Sch. of the Museum of Fine Arts
Amherst College	Emory University	Mercyhurst College*	School of Visual Arts
Appalachian State University	Eugene Lang College	Messiah College*	Univ. of the Sciences in Phila.
Arizona State University	Fairfield University	Miami University, Oxford	Scripps College
University of Arizona	Fairleigh Dickinson Univ., Madison*	University of Miami	Sewanee University*
Art Institute of Boston, Lesley	Florida Atlantic University	Michigan State University	Shimer College
Auburn University	Florida State University	University of Michigan	Skidmore College
Bard College	University of Florida	Middlebury College	Smith College
Barnard College*	Fordham University	University of Mississippi*	University of South Carolina**
Baruch College of the CUNY	Franklin & Marshall College*	Morgan State University	Univ. of South Florida, Tampa
Bates College	Franklin College Switzerland	Mount Holyoke College	Univ. of Southern California*
Baylor University	Furman University*	Mount Saint Mary's University	Southern Methodist University
Bethany College	Gannon University	Muhlenberg College*	Southwestern University
Birmingham-Southern College	George Mason University	University of Nebraska at Lincoln	Spelman College
Boston College	George Washington University***	Neumann University	Univ. of St. Andrews (Scotland)
Boston University	Georgetown University*	University of New Hampshire	St. John's College*
Bowdoin College	Georgia Institute of Technology**	The College of New Jersey	St. John's University - Queens
Brandeis University	Georgia State University	New York University	St. Mary's College of Maryland*
Bridgewater College	University of Georgia	Niagara University	St. Olaf College
Brown University	Gettysburg College	UNC Chapel Hill**	Stanford University
Bucknell University	University of Glasgow	UNC Charlotte	Stevenson University*
UC Berkeley	Gordon College*	UNC Wilmington	Stony Brook University
UC Davis	Goucher College	NC Central University	SUNY College at Oneonta
UCLA	Greensboro College	NC State University	SUNY Oswego
UC San Diego	Guilford College	Northeastern University	Susquehanna University
UC Santa Barbara*	Hamilton College - NY	Northwestern University	Swarthmore College
Carnegie Mellon University**	Hampton University	College of Notre Dame of MD	Sweet Briar College
Carson-Newman College	Harvard University	University of Notre Dame	Syracuse University*
Case Western Reserve Univ.	Harvey Mudd College	Occidental College	University of Tampa*
Catholic University of America	Haverford College	The Ohio State University	Temple University
University of Central Florida	High Point University**	Ohio University	Tennessee State University
College of Charleston	Hobart & William Smith Colls.*	Ohio Wesleyan University	Univ. of Tennessee, Knoxville
Chestnut Hill College	Hofstra University	Oral Roberts University	Texas Christian University
University of Chicago*	College of the Holy Cross	Oxford College of Emory Univ.	The University of Texas, Austin
Chowan University	Hood College*	University of the Pacific	Towson University*
Claremont McKenna College	Howard University	Parsons School of Design*	Trinity College
Clark Atlanta University	Univ. of IL, Urbana-Champaign	Penn State, Harrisburg	Tufts University
Clark University	Immaculata University	Penn State, University Park	Tulane University*
Clemson University	Indiana University at Bloomington	University of Pennsylvania**	Union College
Coastal Carolina University	Ithaca College	University of Pittsburgh	United States Naval Academy
Colby College	Jacksonville University	Pitzer College	University of the Arts
Colgate University	James Madison University*	Pomona College	University of Utah
Univ. of Colorado at Boulder*	Johns Hopkins University**	Pratt Institute	Vanderbilt University*
Colorado College	Kansas State University	Princeton University	Vassar College
Colorado School of Mines	University of Kansas	Providence College	University of Vermont
Columbia College	Kenyon College	Purchase College	Villanova University
Columbia University	La Salle University*	Purdue University	Virginia Commonwealth University
Connecticut College	Lafayette College	Queens University of Charlotte	Virginia Tech
University of Connecticut	Lehigh University	Quinnipiac University	Virginia Union University
Cooper Union	Lenoir-Rhyne University	Randolph College	University of Virginia*
Cornell University*	Lincoln University	Randolph-Macon College*	Wagner College*
Curry College	Longwood University	University of Redlands	Wake Forest University
Dartmouth College	Louisiana State University	Reed College	Washington & Jefferson College
Davidson College	Loyola Marymount University*	Rensselaer Polytechnic Institute	Washington & Lee University
Davis & Elkins College*	Loyola University Chicago	Rhode Island School of Design	Washington College*
University of Dayton	Loyola University Maryland**	Rhodes College*	Washington Univ. in St. Louis
Delaware State University	Loyola University New Orleans	University of Richmond*	Wellesley College*
University of Delaware	Lycoming College	Roanoke College	Wesley College
Denison University	Lynchburg College*	University of Rochester	Wesleyan University
University of Denver	Lynn University*	Rollins College	West Virginia University
DePaul University	Manhattan College	Rutgers University, New Brunswick	Whittier College
DeSales University*	Manhattanville College	Rutgers University, Newark	College of William & Mary
Dickinson College*	University of Mary Washington	Saint John's University	Williams College*
Drew University	Maryland Institute College of Art*	Saint Joseph's University	Wingate University
Drexel University**	Univ. of MD, Eastern Shore	Salisbury University*	Winston-Salem State University
Duke University	Univ. of MD, Baltimore County	Samford University	Univ. of Wisconsin, Madison
Duquesne University	Univ. of MD, College Park****	University of San Diego	The College of Wooster
East Carolina University	Marymount Manhattan College	San Francisco Art Institute	Xavier University of Louisiana
East Stroudsburg University	Marymount University	Santa Clara University	Yale University
University of Edinburgh	MA Institute of Technology	Sarah Lawrence College	York College of Pennsylvania

\* Denotes 2011 college choice