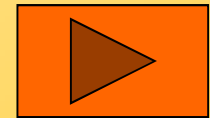


Industrial Revolution

Click here to begin the activity.



This slide show has been created by Heather Hoene at Barrington Elementary School.

These activities will address the following Hazelwood Objectives for fifth grade.



Explain social studies concepts and problem solve orally and in writing.

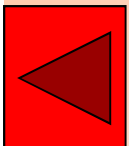


Understand how the Industrial Revolution had an impact on our country.

Directions



Whenever you see this picture, you will need to write the answer in your journal.



← Click here to go back to the previous slide.

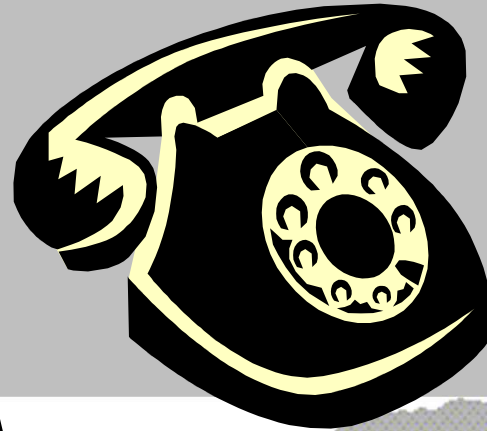
Machines Replace Muscles



How did each of these objects help Americans?



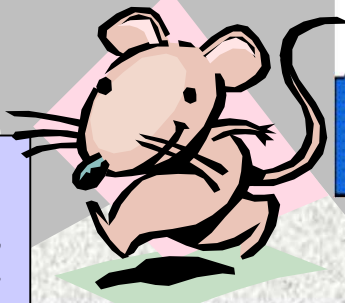
Steel



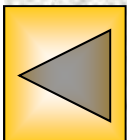
Telephone



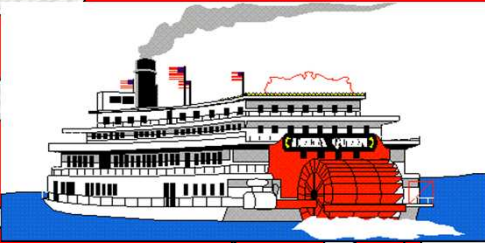
Steam Engine



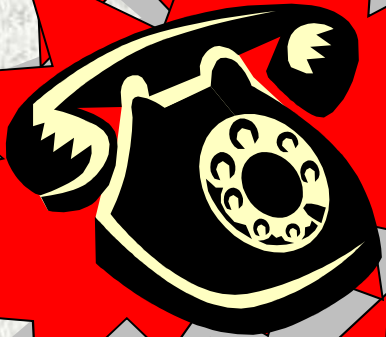
Click mouse for sample answers!



Did you come up with these sample answers?



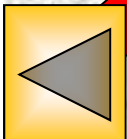
Allowed things to travel upstream



Faster communication

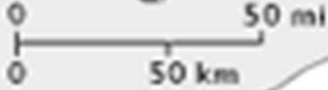


Faster travel of goods and people



1850-1900

Pennsylvania



Lake Erie

Find a good location to place a city and explain your reasoning.

NEW YORK

Ohio River

Susquehanna River

OHIO

NEW JERSEY

Appalachian Mountains

Delaware River

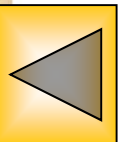
W.VA.

DELAWARE

© 1998 National Geographic Society

MARYLAND

Delaware Bay



1850-1900

Did you place your city anywhere near the cities of today?

Find 

Pennsylvania
0 50 km
Lake Erie

Erie

Scranton

OHIO

NEW JERSEY

Harrisburg

Pittsburgh

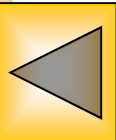
Philadelphia

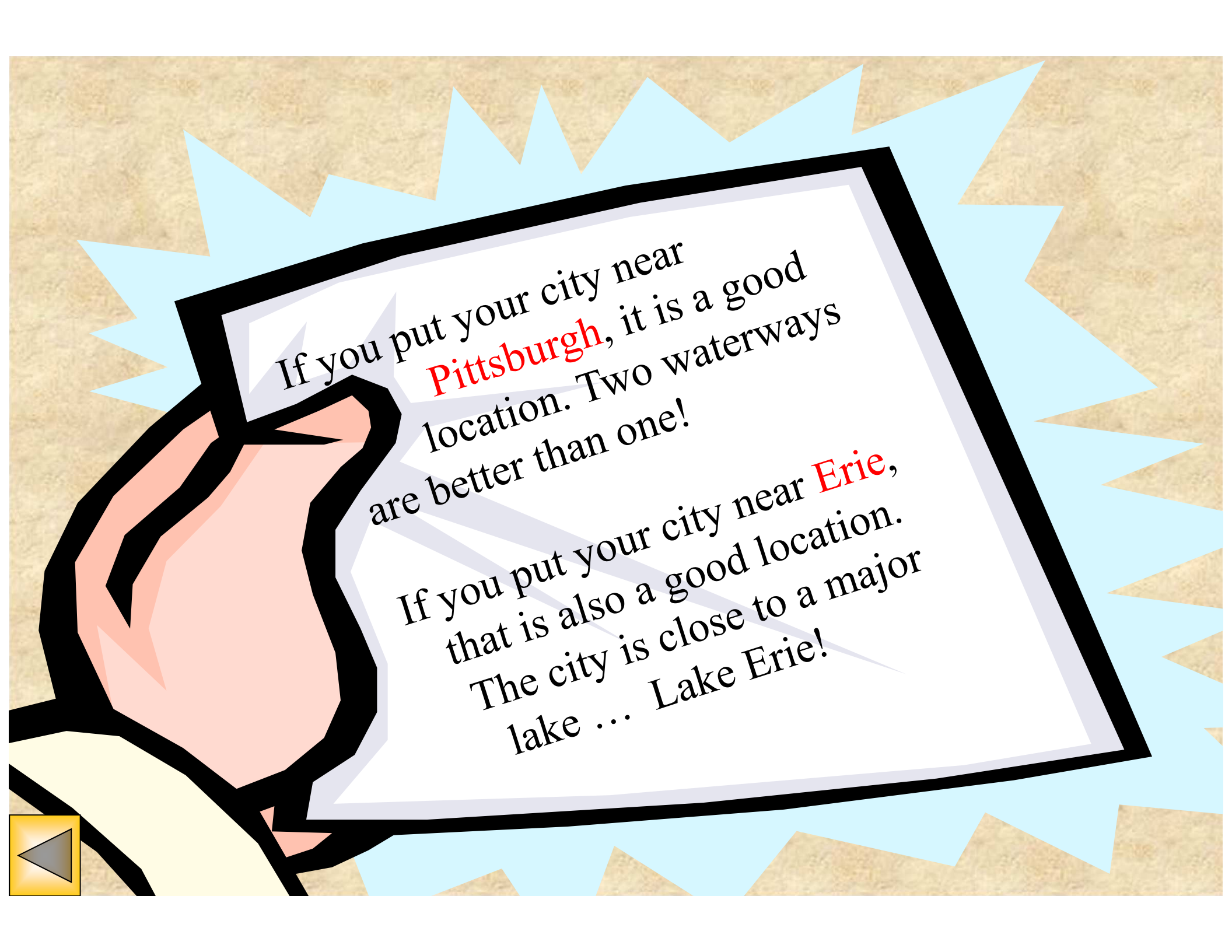
© 1998 National Geographic Society

MARYLAND

DELAWARE

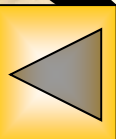
Click to see why...



A hand with a thick black outline holds a white rectangular sign with a black border. The sign contains two paragraphs of text. The background is a light brown textured surface with a light blue jagged starburst pattern behind the sign.

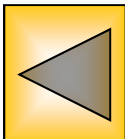
If you put your city near **Pittsburgh**, it is a good location. Two waterways are better than one!

If you put your city near **Erie**, that is also a good location. The city is close to a major lake ... Lake Erie!



WHY DID URBAN AREAS GROW RAPIDLY
DURING THE INDUSTRIAL REVOLUTION?
WRITE ONE OR MORE REASONS.



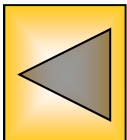
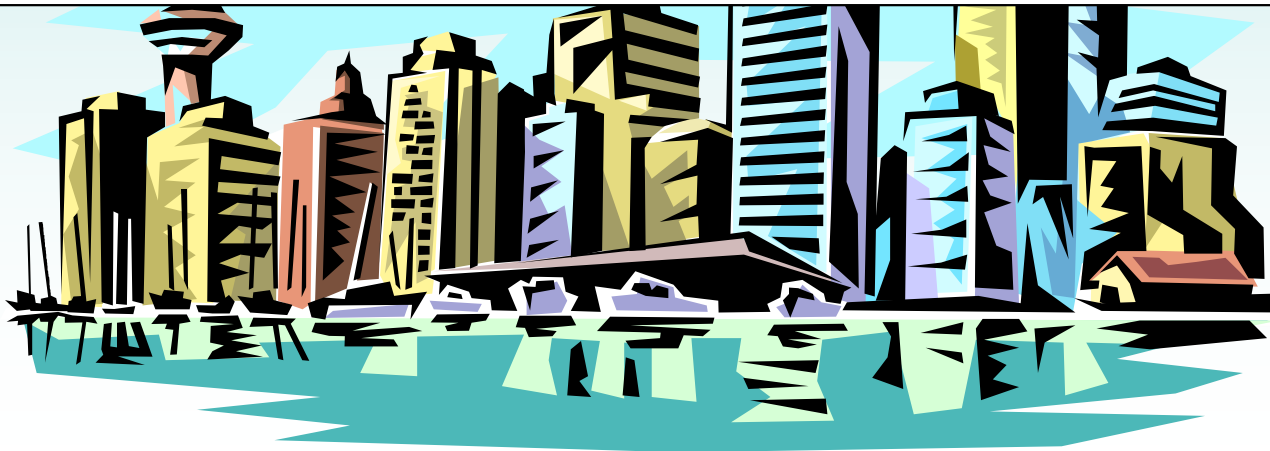


WHY DID URBAN AREAS GROW RAPIDLY DURING THE INDUSTRIAL REVOLUTION?
WRITE ONE OR MORE REASONS.



1. Great need for workers, so many moved to the city

2. Cities located by waterways and railroads



Compare ghost towns to urban centers.

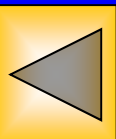


Ghost towns

Urban Centers

--	--

Answers will vary!



Compare ghost towns to urban centers.



Ghost towns

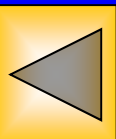
- ~ Empty
- ~ Deserted
- ~ Towns that were once crowded

Urban Centers

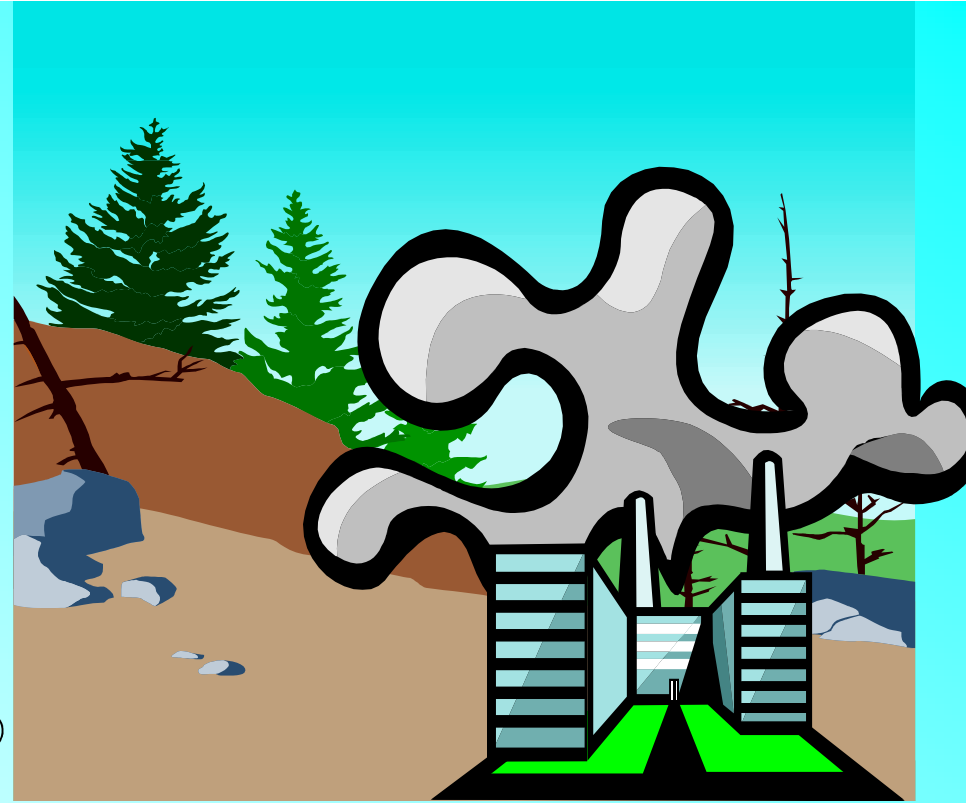
- ~ Crowded
- ~ Business District

Fantastic ideas!

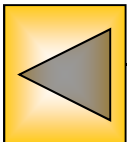
Answers will vary!



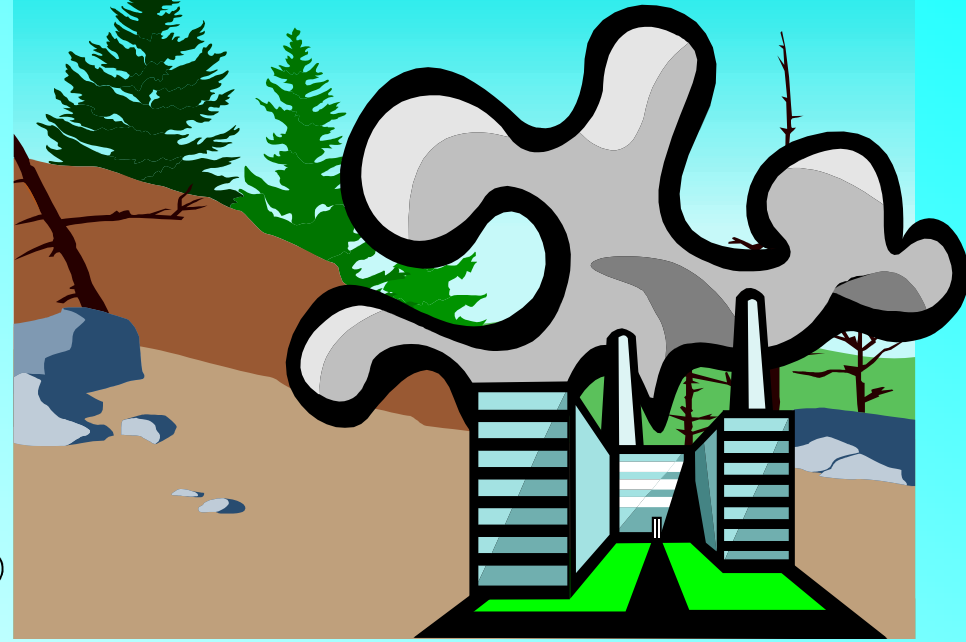
Look at the picture. How do you think industries in America have changed the environment?



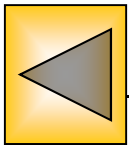
Answers will vary!



Look at the picture. How do you think industries in America have changed the environment?



By looking at the picture, I believe that some industries have polluted our environment. Some laws have been created to stop such pollution.



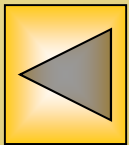
Answers will vary!

Additional Activities



* Pretend you are an American living during the Industrial Revolution. Write a letter to your former homeland or community explaining the changes taking place.

* Write an essay describing a typical day at work during the Industrial Revolution. Include a beginning, middle, and end in your essay.



 The end.