

Science



The parts of a flower

What will we learn today?

- We will learn to label the parts of a plant and flower.
- We will learn that plants produce flowers which have male and female organs.
- We will learn that seeds are formed when pollen from the male organ fertilises the female organ.

There are four main parts of a plant.

Can you guess what they are?

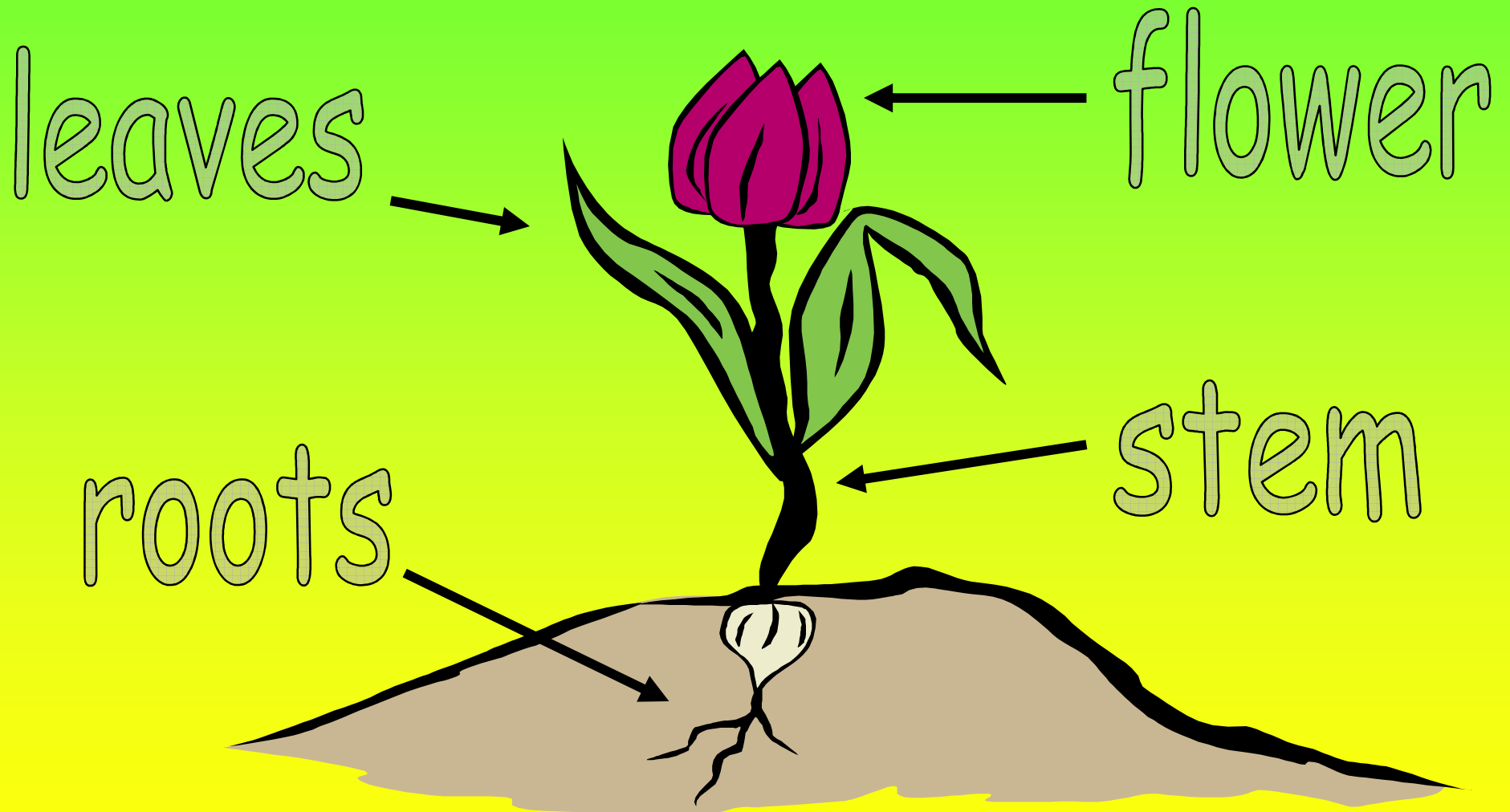
1. R o o t s

2. S t e m

3. L e a v e s

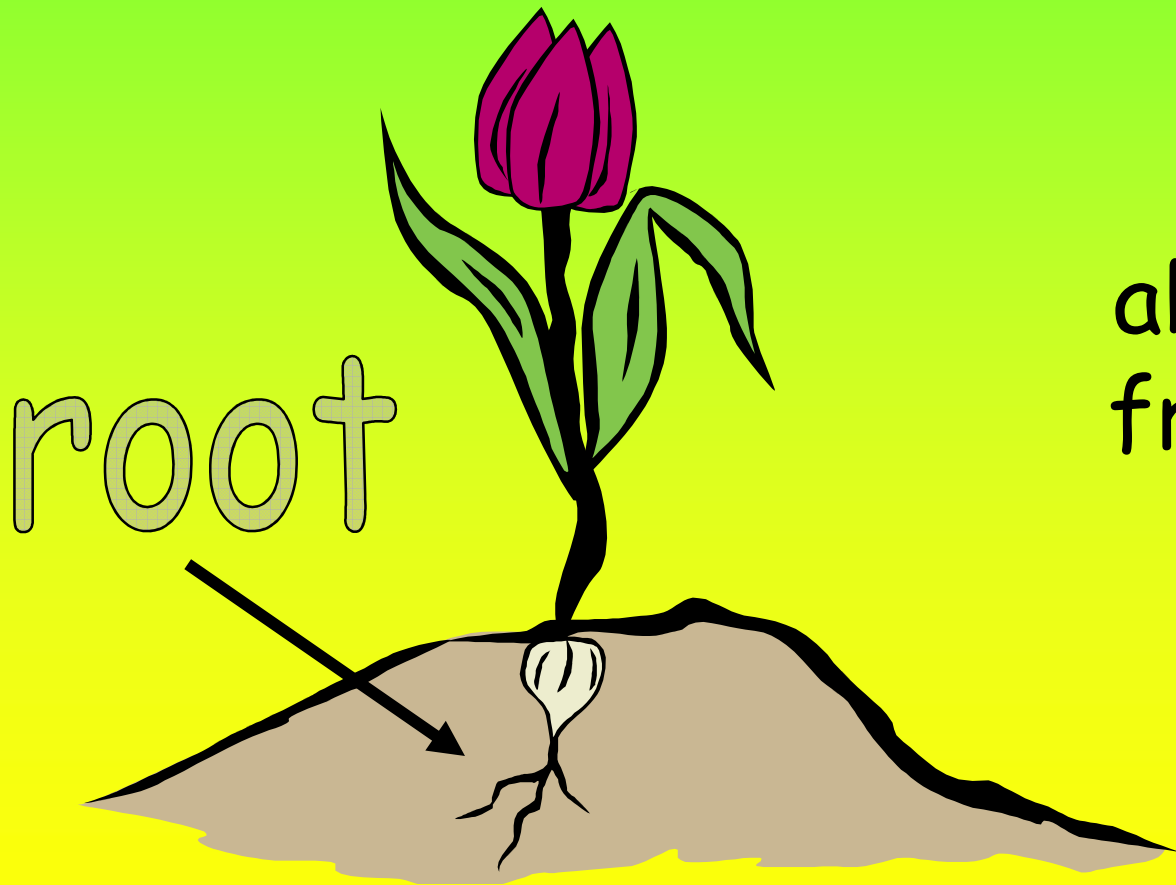
4. F l o w e r

Look at this picture.



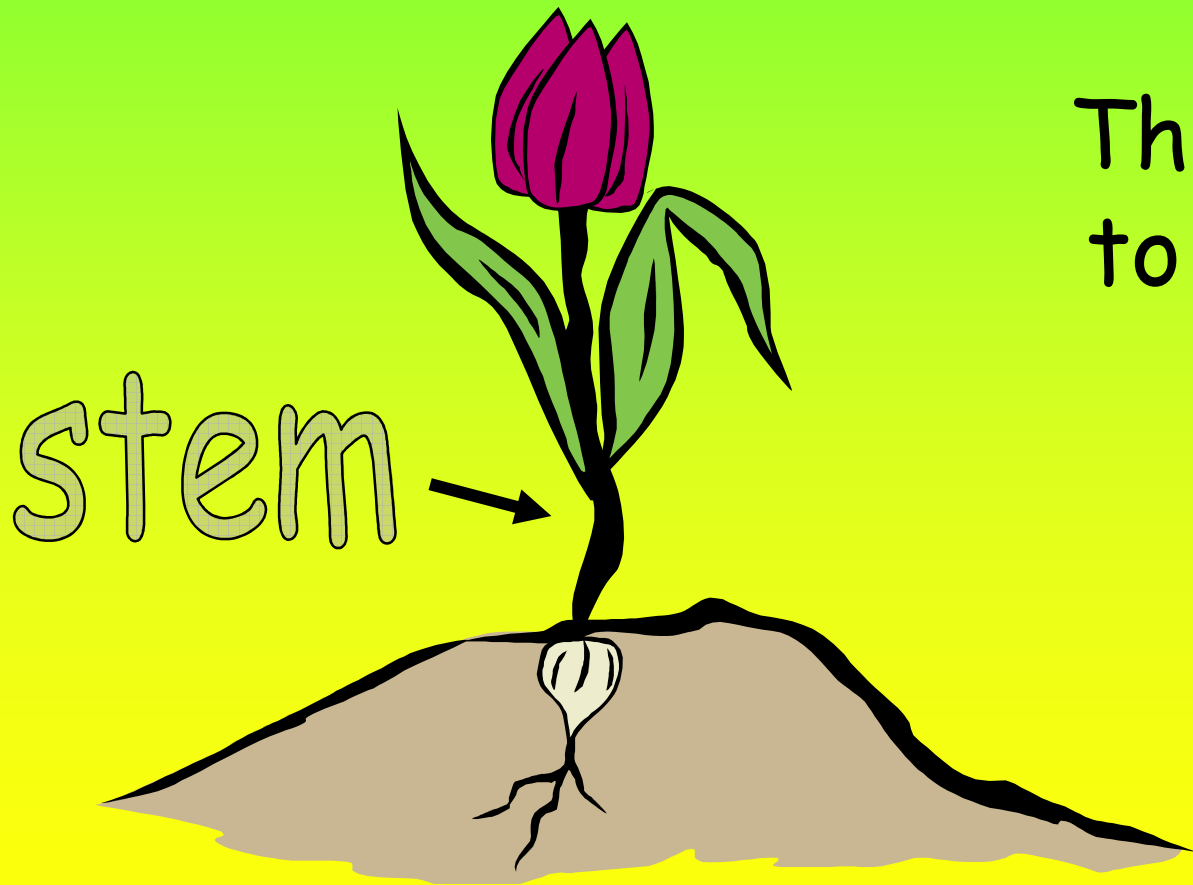
Can you label the parts of the plant?

What is the function of the root?



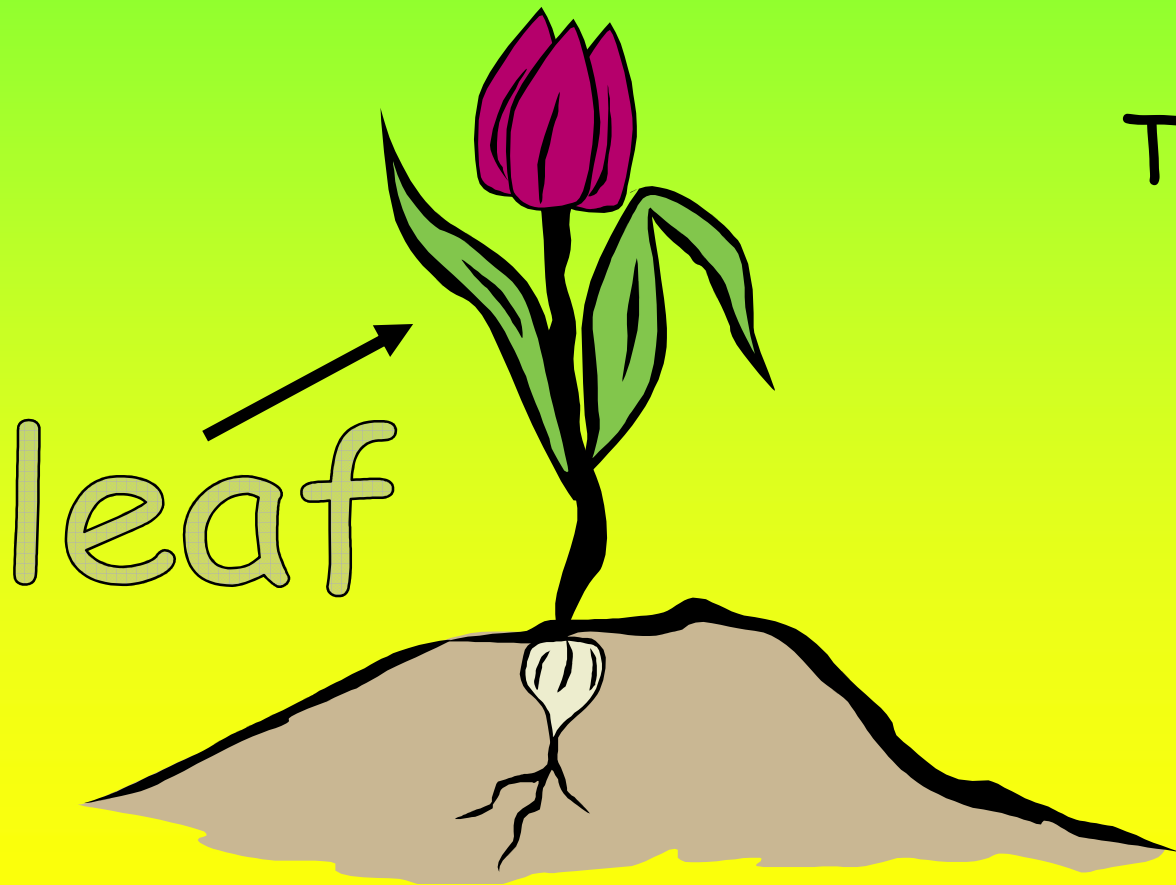
The roots
absorb water
from the soil.

What is the function of the stem?



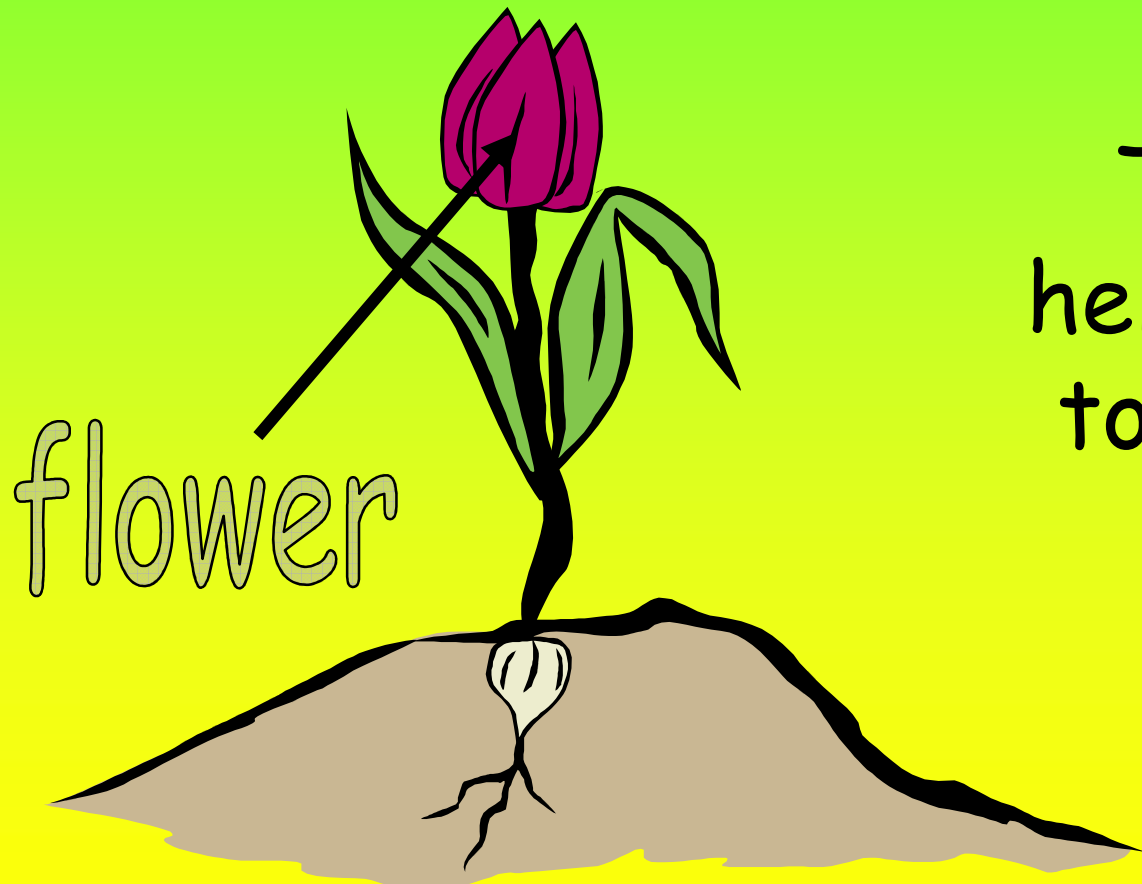
The stem helps to support the plant.

What is the function of the leaf?



The leaves use sunlight to provide the plant with energy.

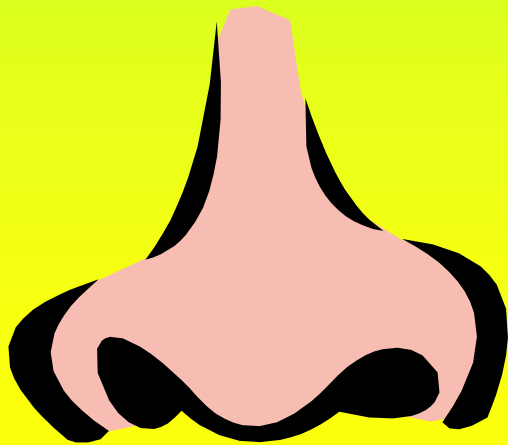
What is the function of the flower?



The flower helps the plant to reproduce.

Look carefully at your flower
with your partner

What does
it smell
like?



What can you
see?



All flowers have
male and female
parts



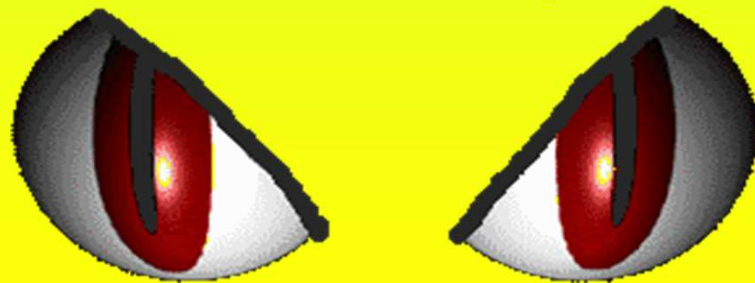
carpel

This is the name for the
FEMALE part of the flower.

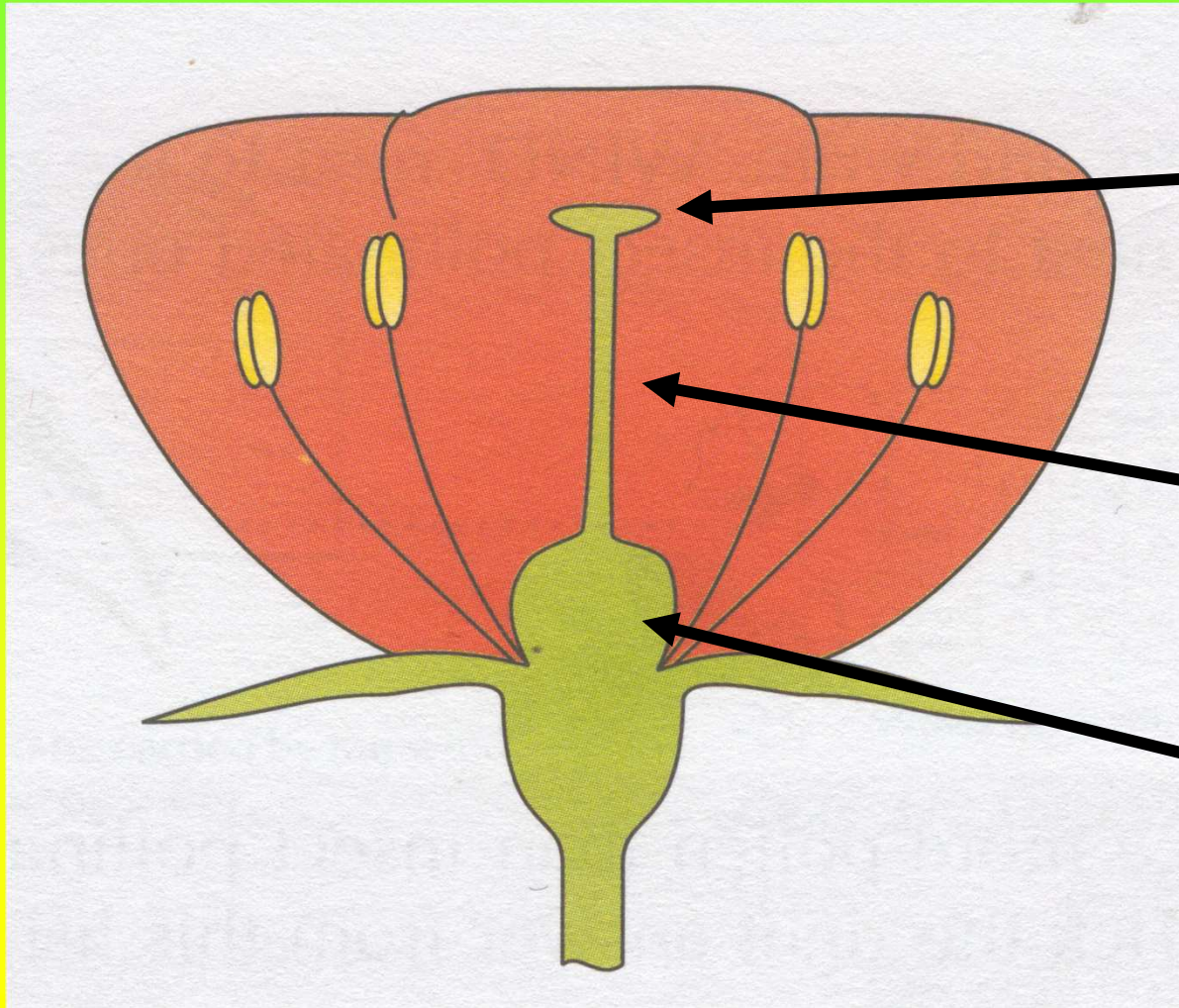
stamen

This is the name for the
MALE part of the flower.

Look closely at your
flower as we name the
different parts



The carpel (female part)



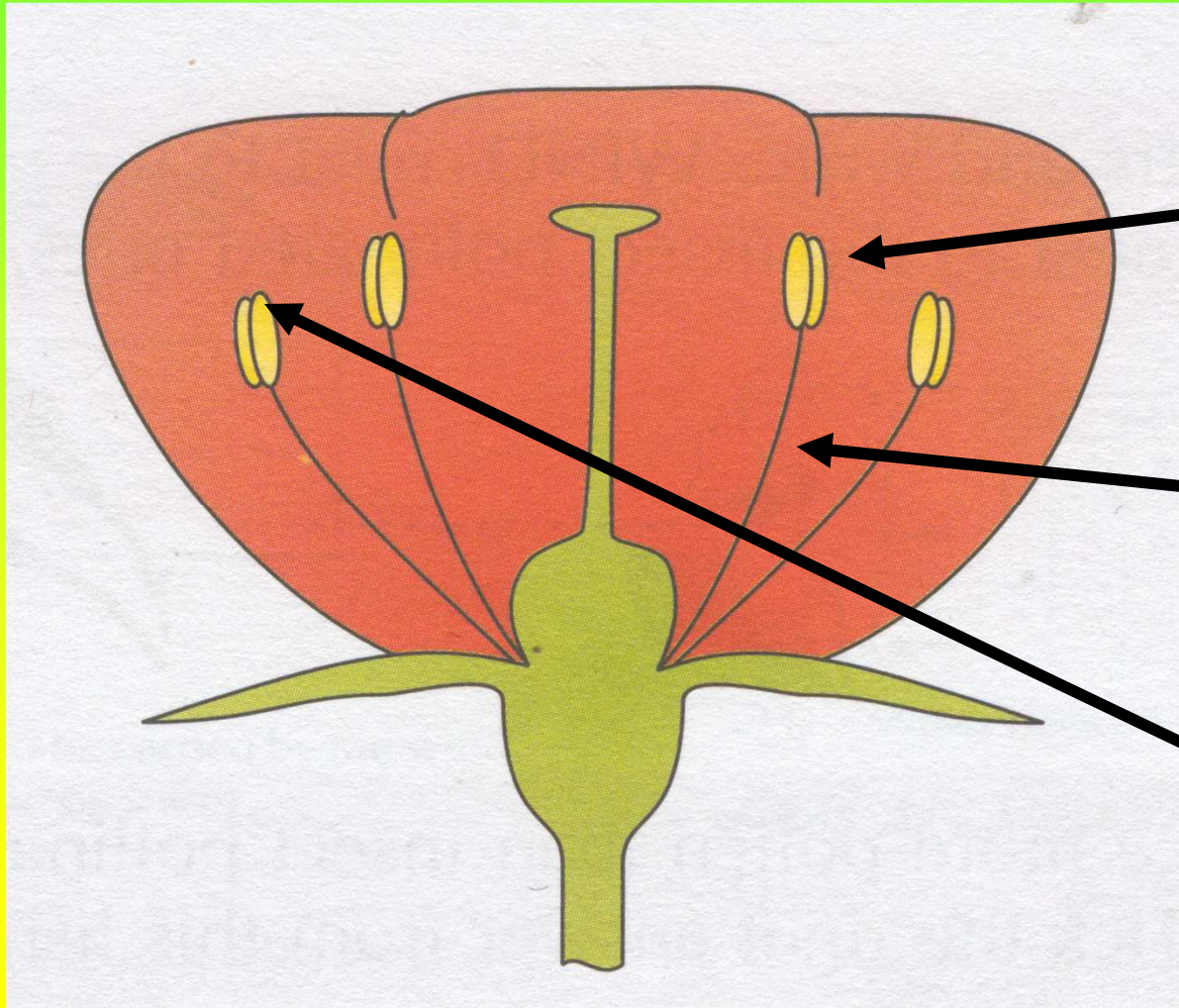
stigma

style

ovary

The stamen

(male part)

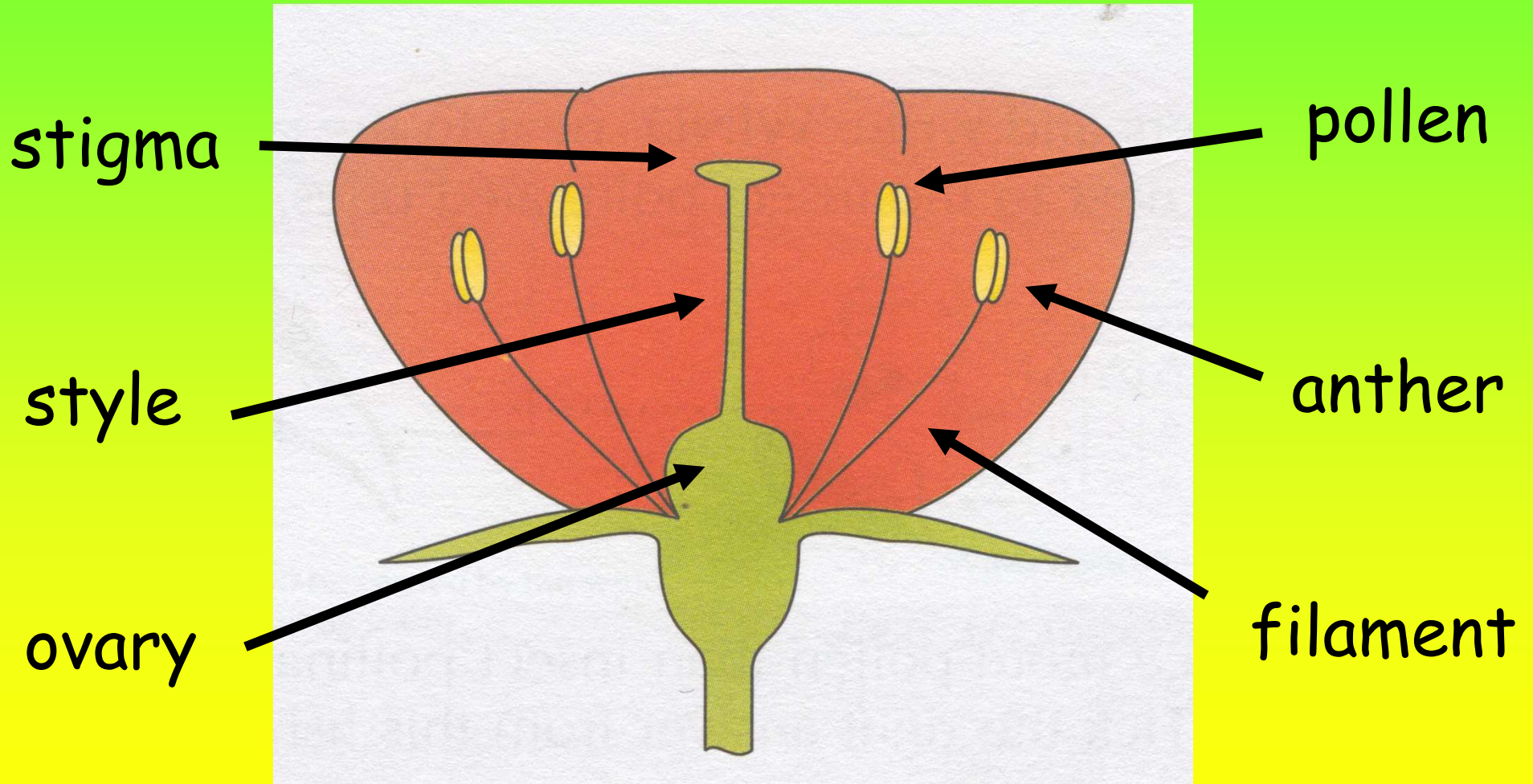


anther

filament

pollen

The parts of a flower



Draw a detailed diagram of your flower

Label the following parts on your diagram...

the carpel

the stamen

stigma
style
ovary



anther
filament
pollen

What have we learnt today?

- We can label the parts of a plant and flower.
- We know that plants produce flowers which have male and female organs.
- We know that seeds are formed when pollen from the male organ fertilises the female organ.

Next week...

We will find out more about how flowering plants reproduce.



We will also find out that insects pollinate some flowers and discover how this is done!