

# How a Flower is Pollinated



The purpose of all flowers is to be pollinated and produce seeds

# What do petals do?



- Partly used to protect the male and female parts of the plant
- Some plants use wind to blow the pollen and they have small leaves
- Plants which use insects to transfer the pollen usually have large petals which smell and are brightly coloured

# What is the male part?



- The male part of the flower is called the stamen
- It has a long stalk called the filament
- At the top of the filament is the anther

# What is the anther?

- The anther produces pollen



# What is the female part?



- Carpels are the female parts
- They are made up of a stigma, style and ovary

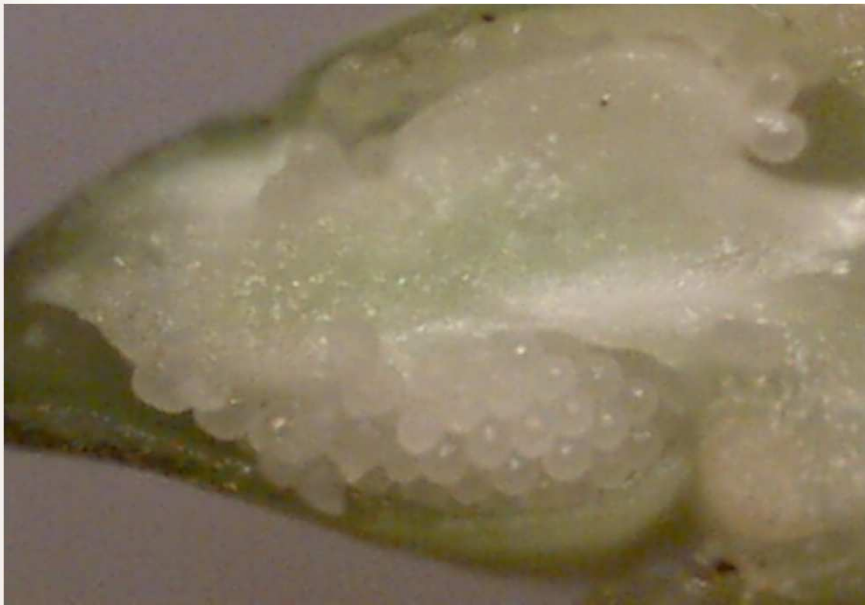
# What is the stigma?



- It is at the top of the carpel
- It is sticky which helps catch pollen grains

# What are the ovaries?

- The ovaries are where the eggs are made





# How does pollination take place?

- Pollen grains brush against the insect, it flies to another plant, the grains rub on the stigma
- The grain of pollen grows a tube, which goes down the style until it reaches the ovary
- The male part joins with the female part to form a seed. This is called fertilization.
- After fertilization the petals drop off because they are no longer needed