

Data Storage Bingo Lesson Plan

Title: Data Storage Bingo		Grade Range: K-2
Integrated Curriculum Area: Language Arts	Concepts and Competencies: Vocabulary, Listening	Tool: Computer
Summary: Students practice recognizing various computer parts and data storage devices by playing a modified bingo game.		

Materials

- Beans, counters, or bits of paper (to be used as bingo markers)

Warm-up

- Make sure students have completed the EasyTech lesson **Computer Basics: Data Storage** and its prerequisites.
- Display each picture from the picture Student Activity Page and discuss its function and/or significance with the class.
- Review the skills/vocabulary learned in the EasyTech lesson.
- Explain the rules to the bingo game.

Activity

Students will reinforce their knowledge of computer parts as they play bingo:

- Students cut out the pictures and paste them in random order on their bingo boards.
- Teacher reads one of the statements from the Activity Page to the class.
- Students place a marker on the picture that matches the description read.
- Teacher continues the calling process until one of the students calls bingo when he or she has a row of three down, across, or diagonally.

Wrap-up

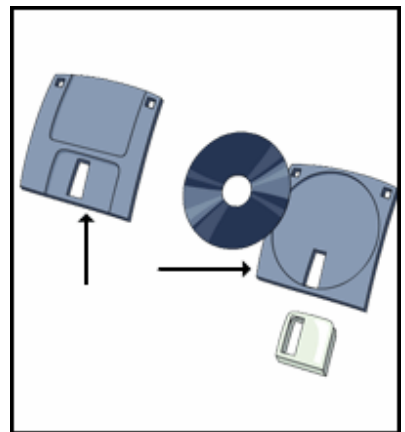
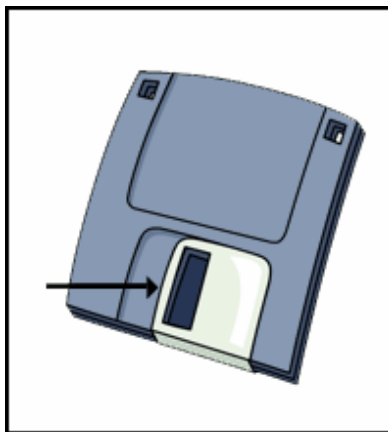
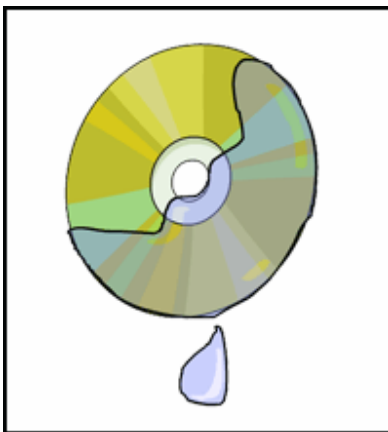
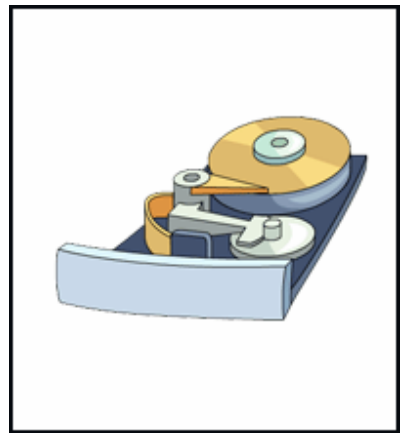
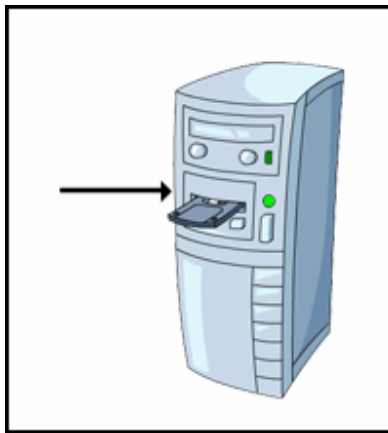
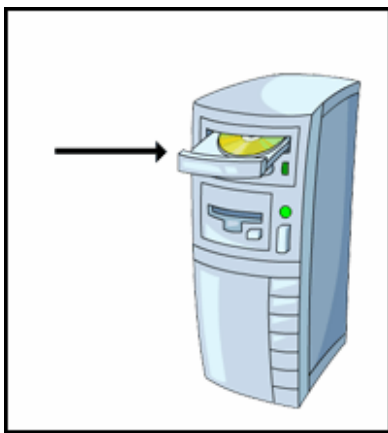
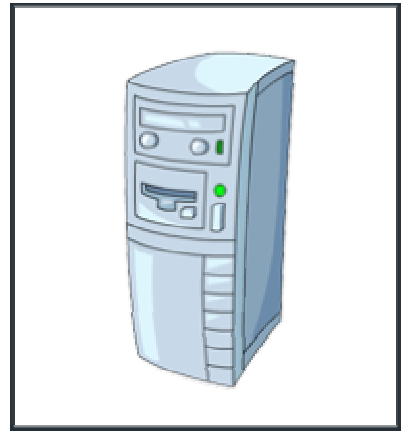
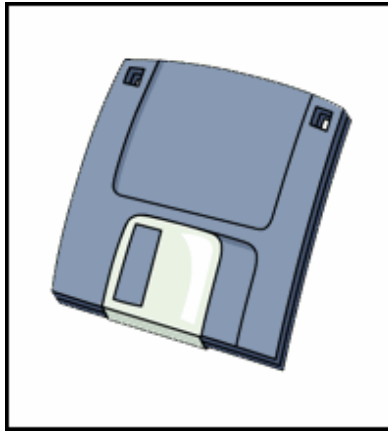
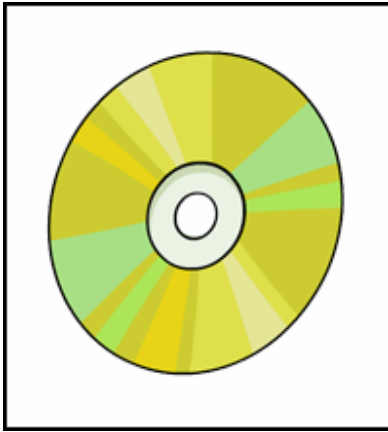
- Review the names and functions of the computer parts.
- Discuss how to properly care for the data storage devices.

Extension

- Divide the students into groups of three or four, and allocate time for them to play the bingo game in small groups. Give each group a set of the statement cards.

Data Storage Bingo Activity Page

Cut.



Data Storage Bingo Activity Page

(Bingo Board)

Paste.

Data Storage Bingo Activity Page (Teacher)

Read the following statements in a random order:

<p>Information is stored on this soft disk that is covered with hard plastic.</p>	<p>This is a CD-ROM, or CD, that stores information.</p>	<p>The arrow is pointing to the floppy disk drive.</p>
<p>The arrow is pointing to the CD-ROM drive.</p>	<p>This is a picture of the hard drive.</p>	<p>This is the CPU, or the box where the hard drive and the processor are usually located.</p>
<p>The arrow is pointing to the hard plastic case that protects the floppy disk.</p>	<p>The arrow is pointing to the window the computer looks through to read information on a floppy disk.</p>	<p>If this happens, it will destroy a CD.</p>