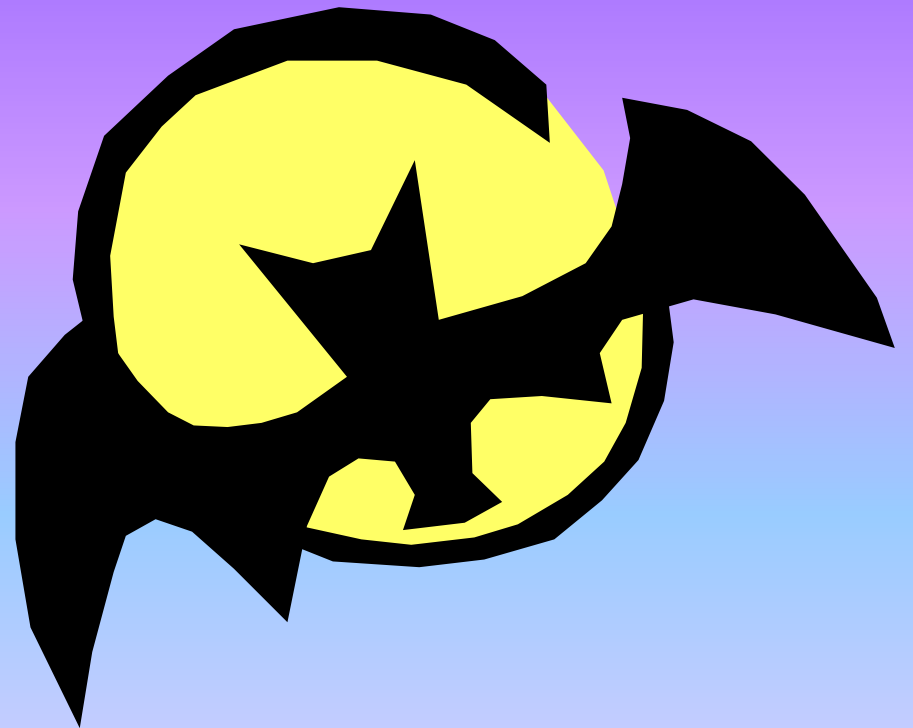
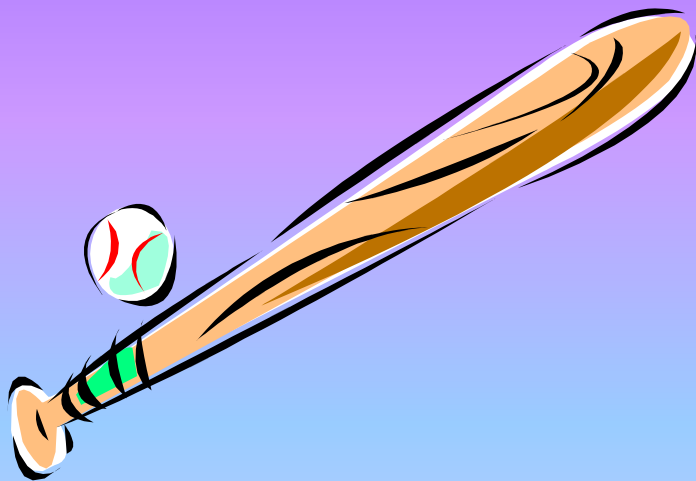


# Spelling Sound Pattern

**-at**

by Nancy Blankenship

bat



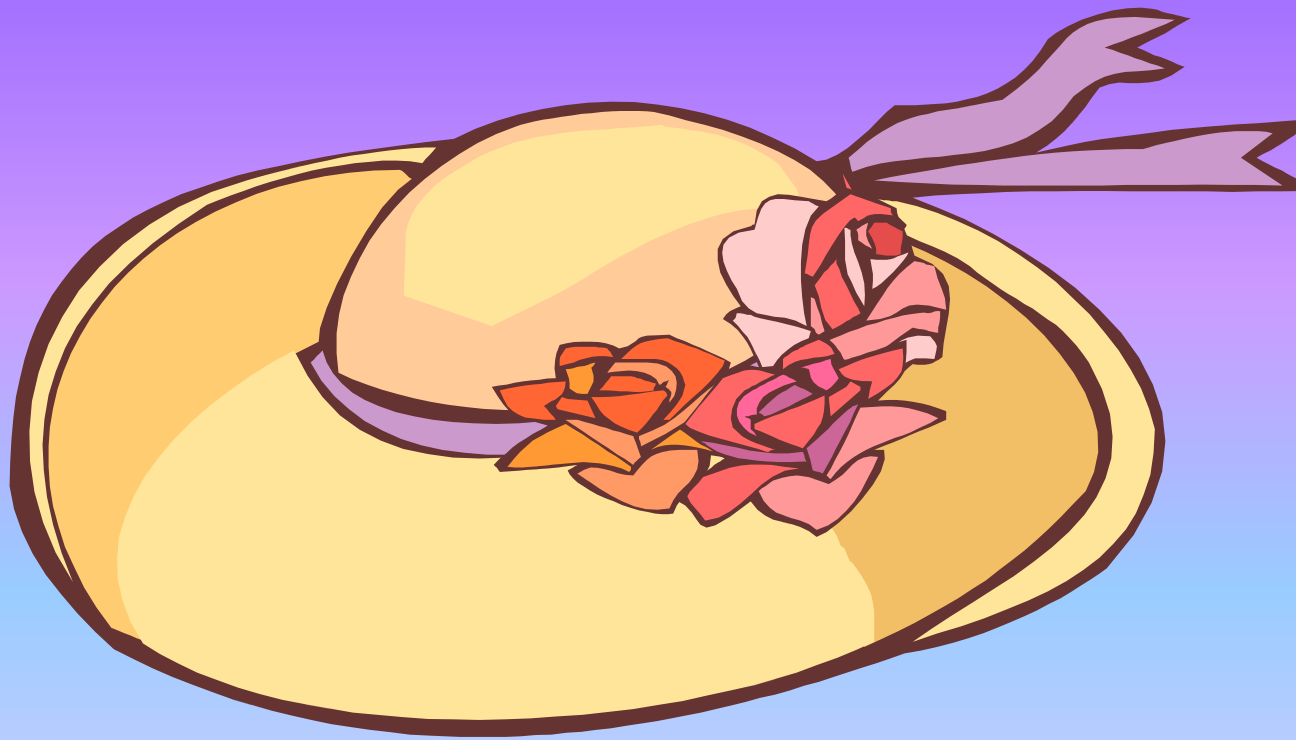
cat



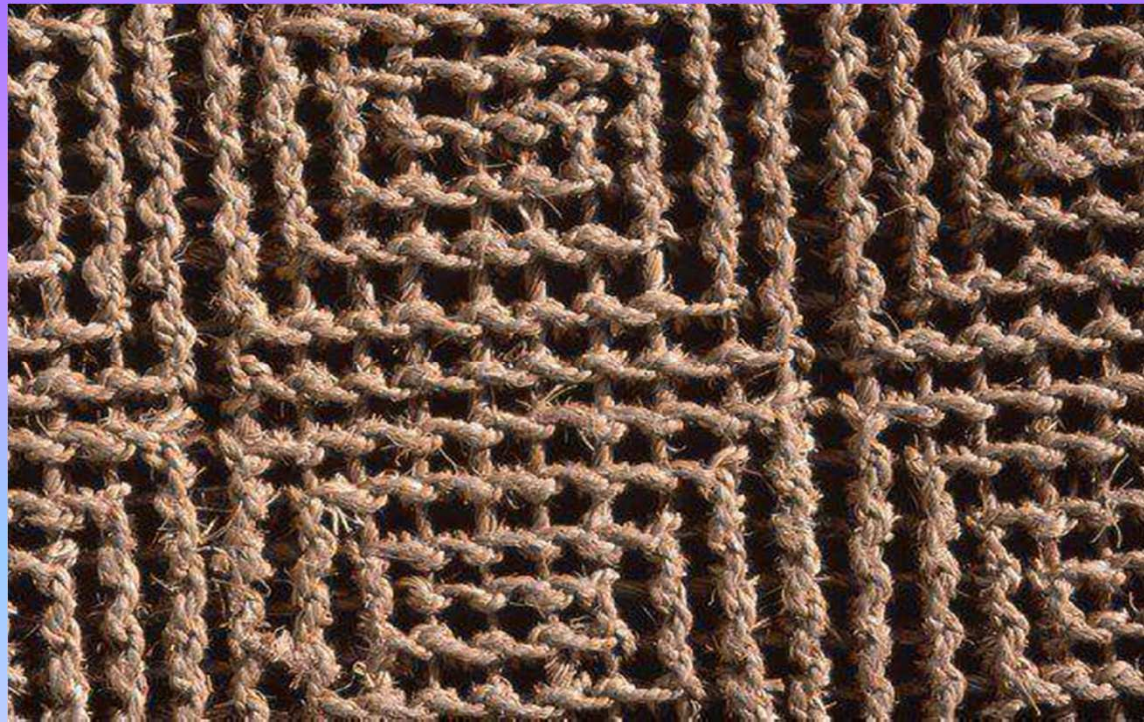
**fat**



hat



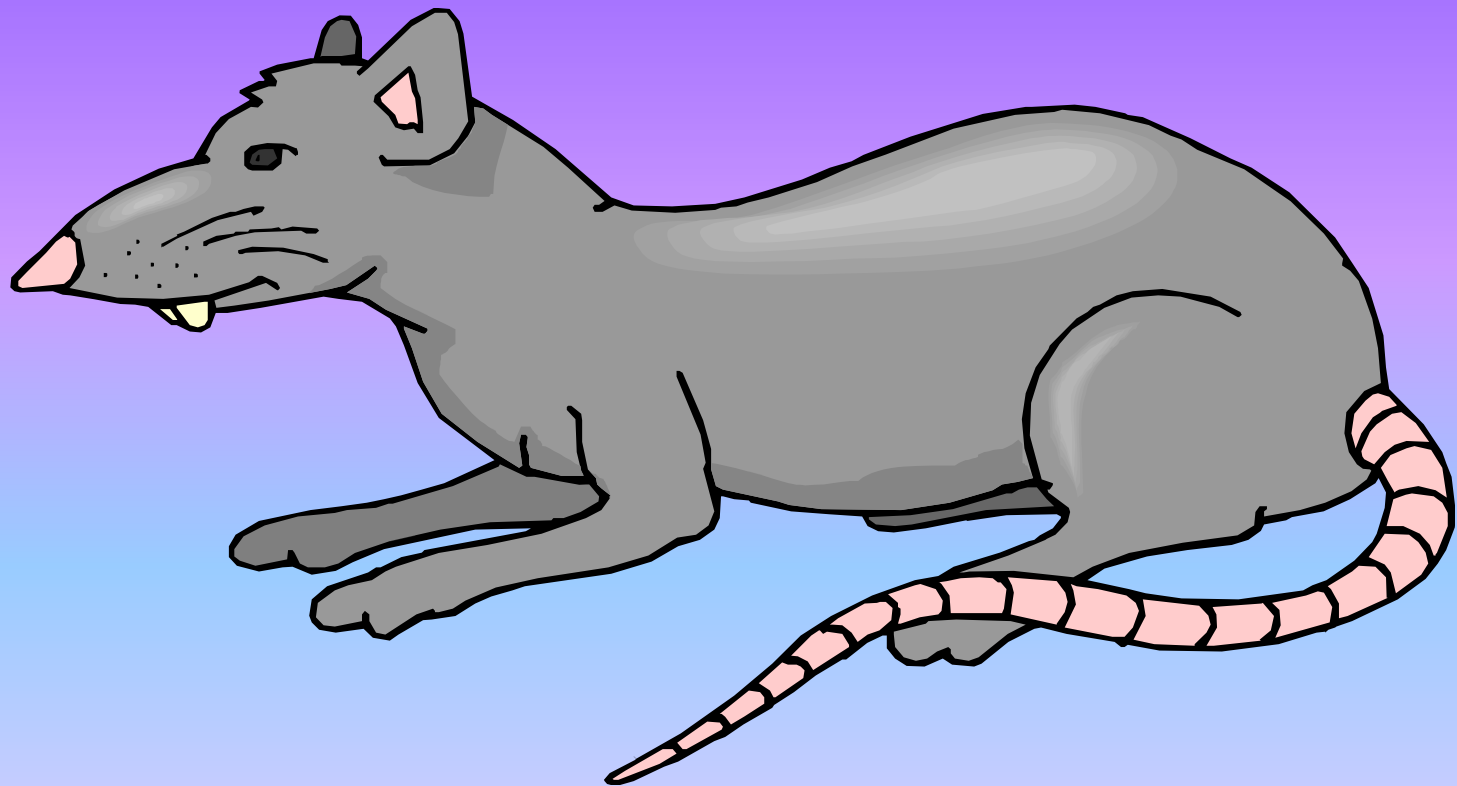
# mat



pat



rat



sat



# vat



# chat



**bat**

**cat**

**fat**

**hat**

**mat**

**pat**

**rat**

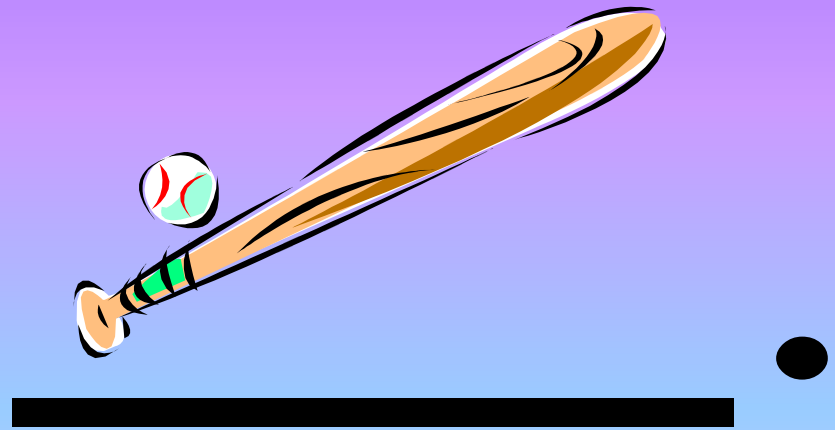
**sat**

**vat**

**chat**

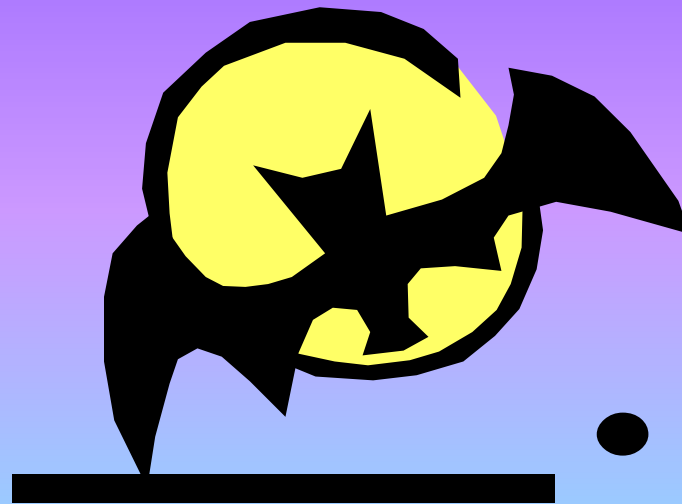
The boy

has a



I see a

black



I can pat

the



.

**Santa is**



**and**

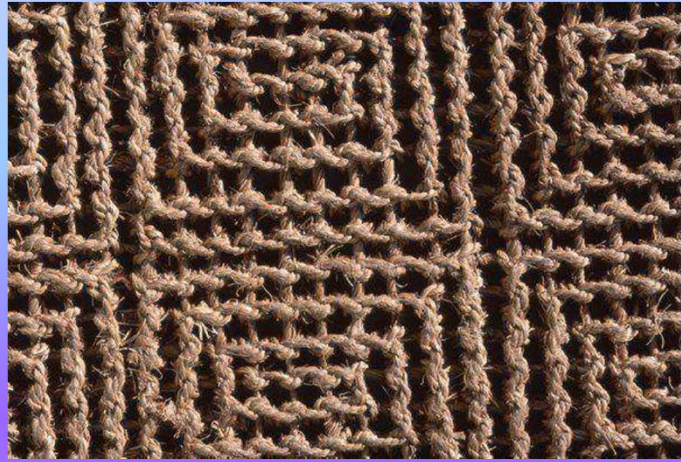
**jolly.**

The girl

has a



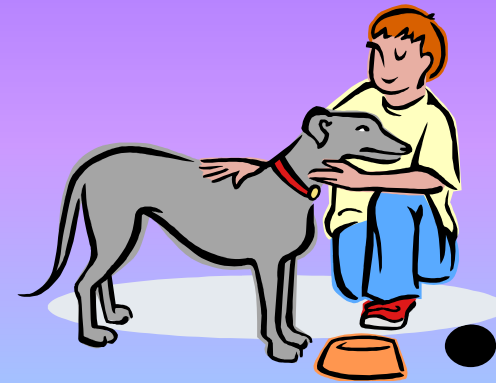
**The**



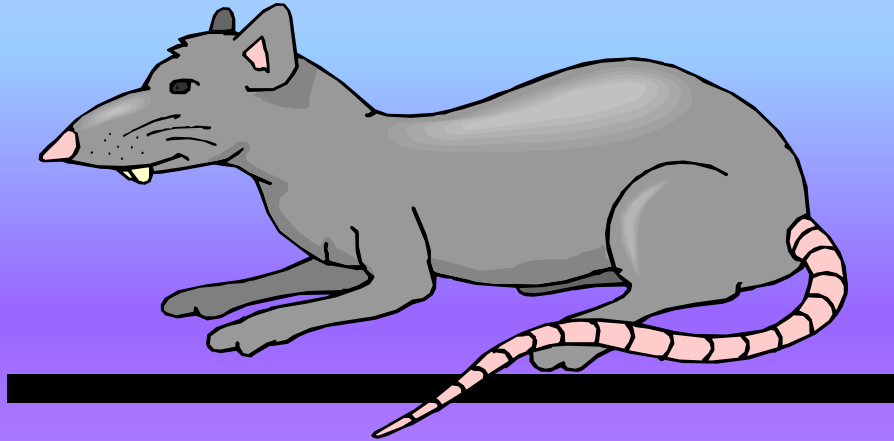
**is brown.**

Give the

dog a



**A**



**can bite.**

**She**



**down.**

**The**



**is big.**

They like

to



.