

Computers!

- These are computers. Computers come in many shapes and sizes.



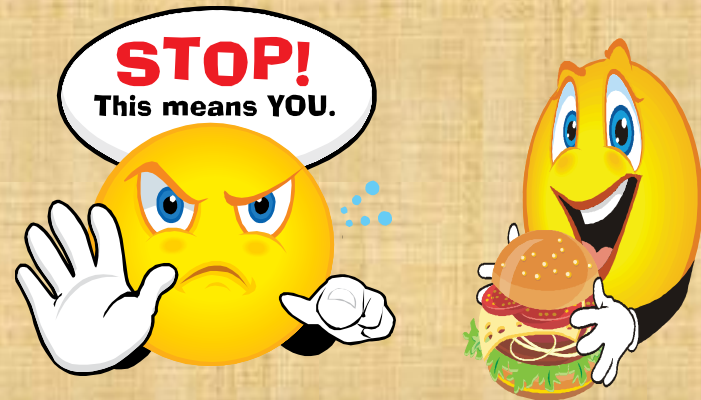
- When you work with computers you should take care of them because they are expensive.



- Always follow your teacher's instructions.



- Keep food and drink away from computers to keep them running smoothly.



- Never hit a computer!

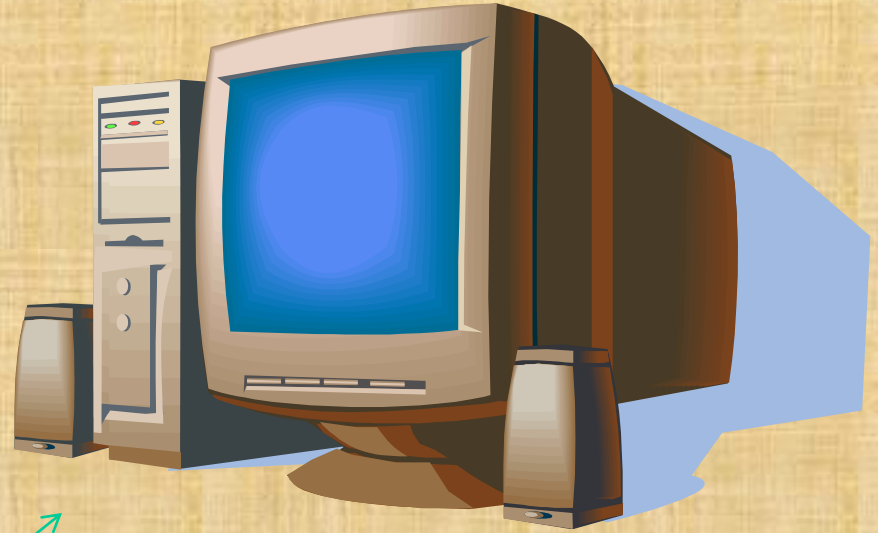


Computer parts

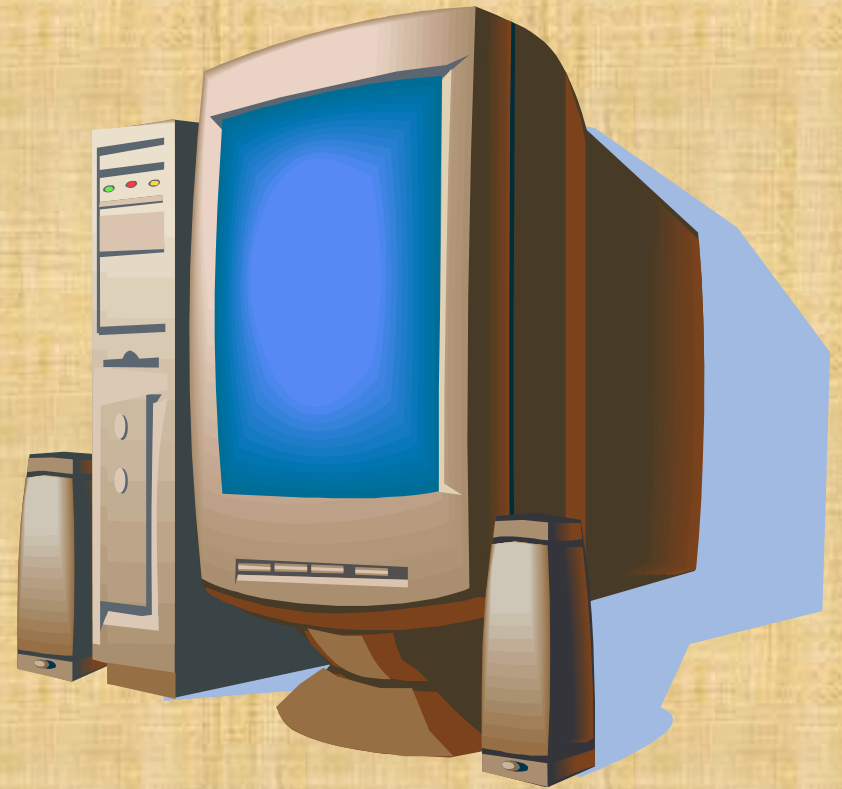
- All computers are made up of parts.
- Lets talk about them!



- Some computers connect their parts through wires and cables. (desktop)
- Other computers connect their parts inside. (laptop)



Which computer connects its parts with wires and cables? (pick one)





**Great
Job!**

Click here to go to the next slide.



**OPPS!
TRY
AGAIN!!!**

Click here to go back.

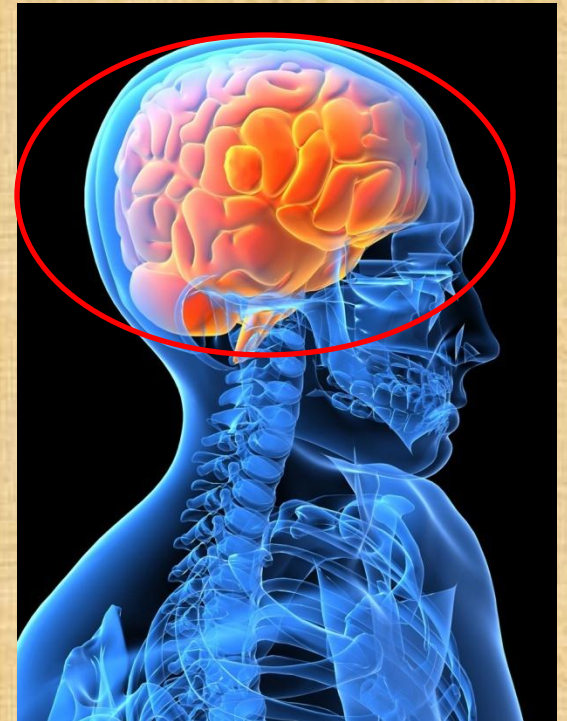
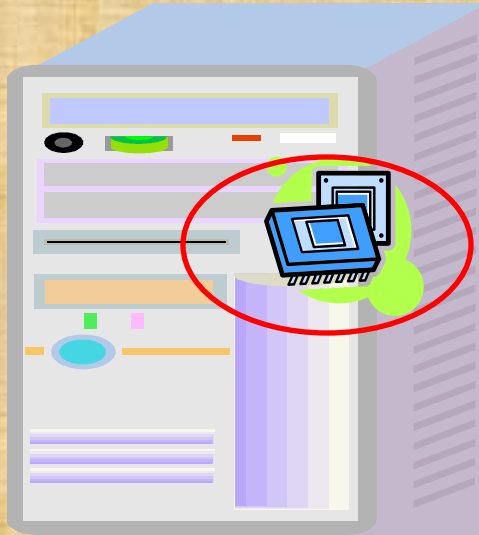
All computers are made up of 3 parts.

- Processing devices
- Input Devices
- Output devices

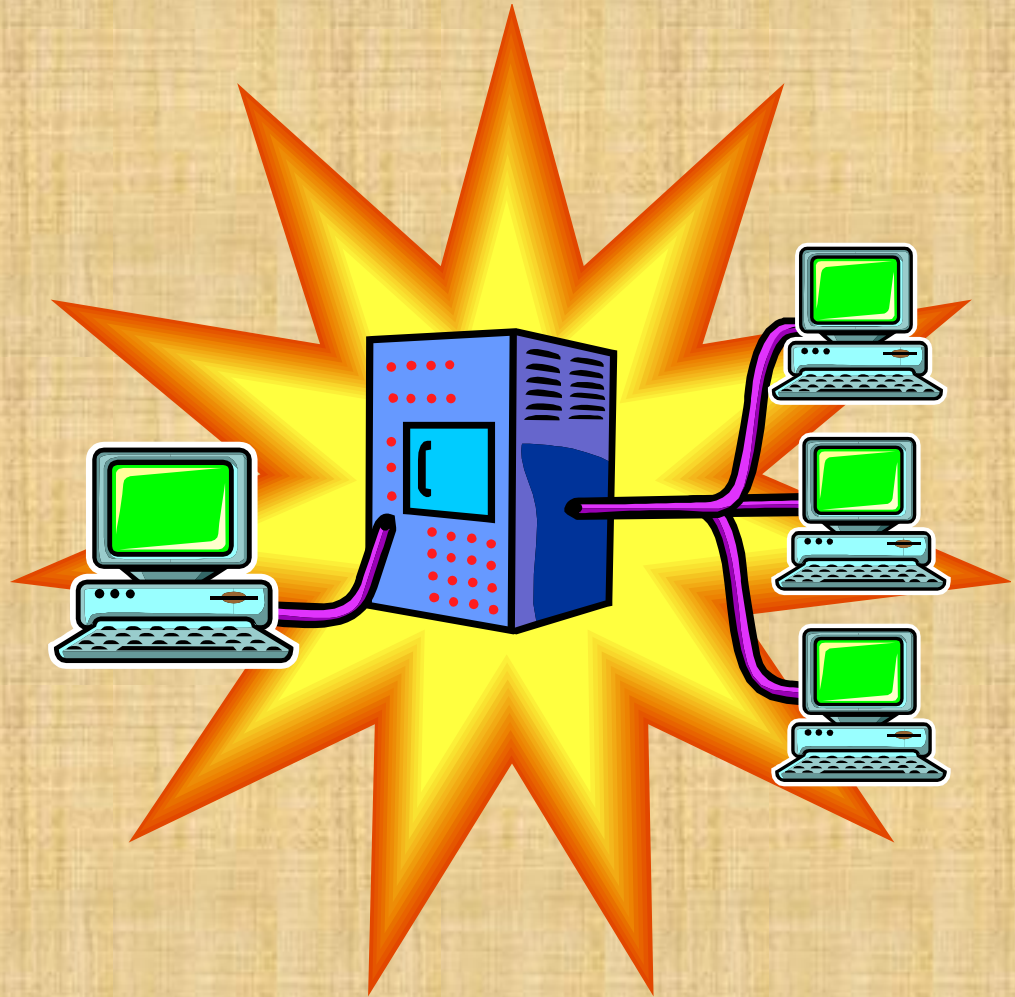


Processor

- A processor is the part that is like a computer's brain.



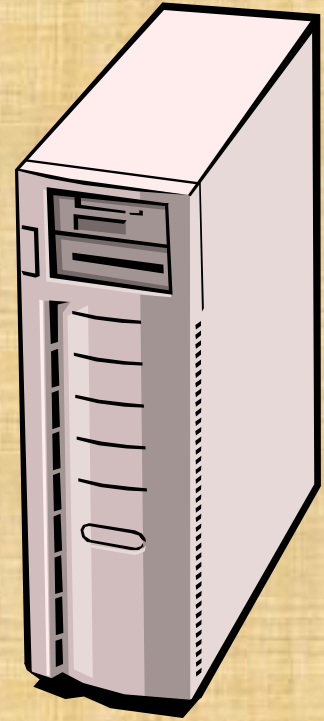
- The processor is in charge of running the computer.
- Without a processor, the computer cannot make sense of information given.
- No processor = a not functioning computer!



- It is usually stored in a computer case or in a hard box to protect it. It is just like how our skull protects our brain.



Which part of the computer holds the processor? Click on the correct picture.





Great
Job!

[Click here to go to the next slide.](#)



OPPS!
TRY
AGAIN!!!

[Click here to go back.](#)

- Because the processor is often contained in a case the whole case is often called the CPU-Central Processing Unit.



Input devices

- Input devices are parts that let you put information into a computer.



Keyboards are input devices.

- It is used to type words, numbers, and symbols in the computer.



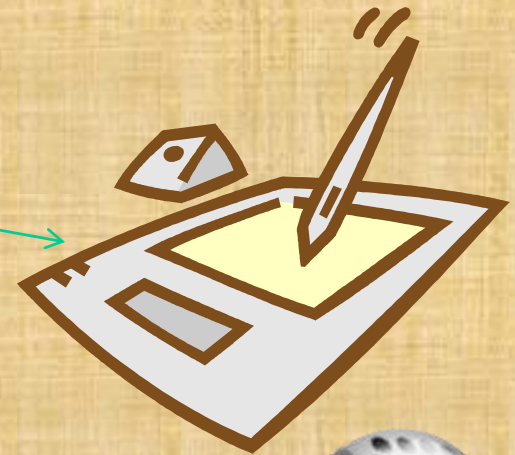
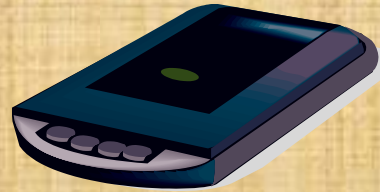
The mouse is an input device.

- The computer mouse allows you to select or choose items on the screen.



Other input devices include:

- Scanners
- Drawing pads
- Joysticks
- Microphones
- All these devices require that you put information into the computer.

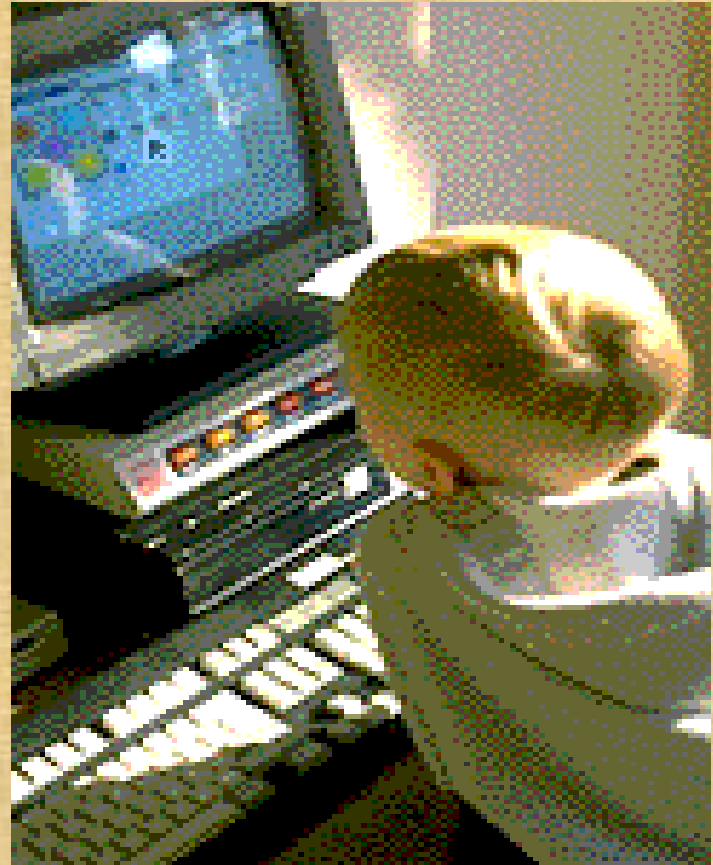


The keyboard and the mouse
are...(click the right answer)

Input Devices

Output Devices

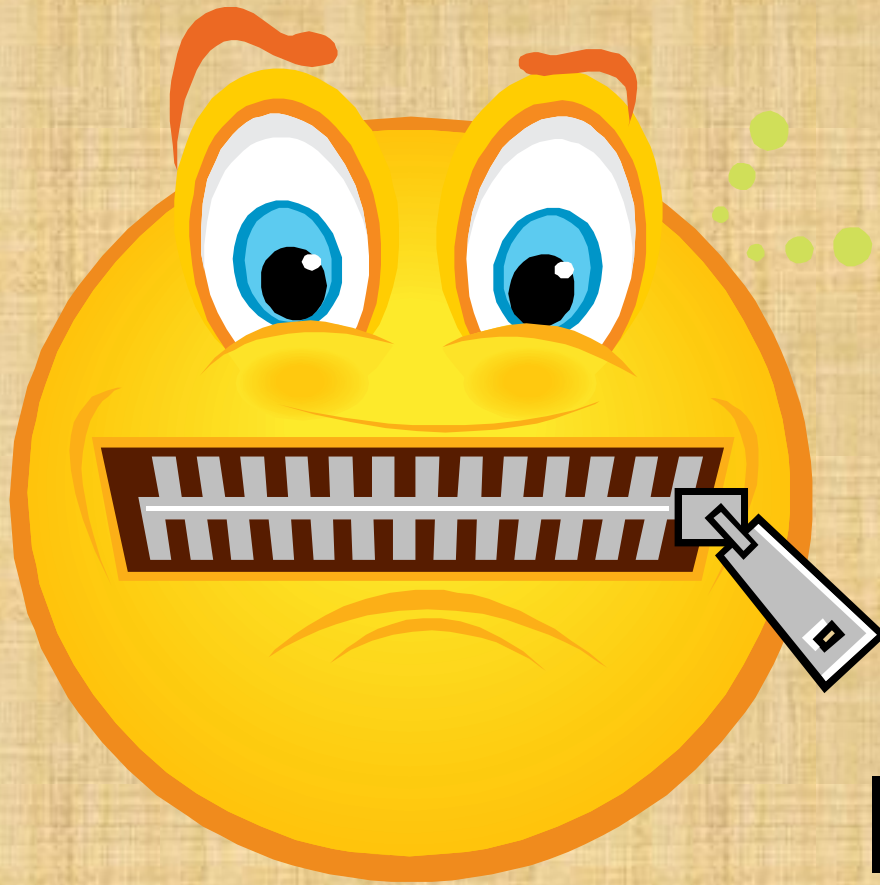
Not devices





Great
Job!

[Click here to go to the next slide.](#)



OPPS!
TRY
AGAIN!!!

[Click here to go back.](#)

Input Devices...

A) Put in information

B) Send out information

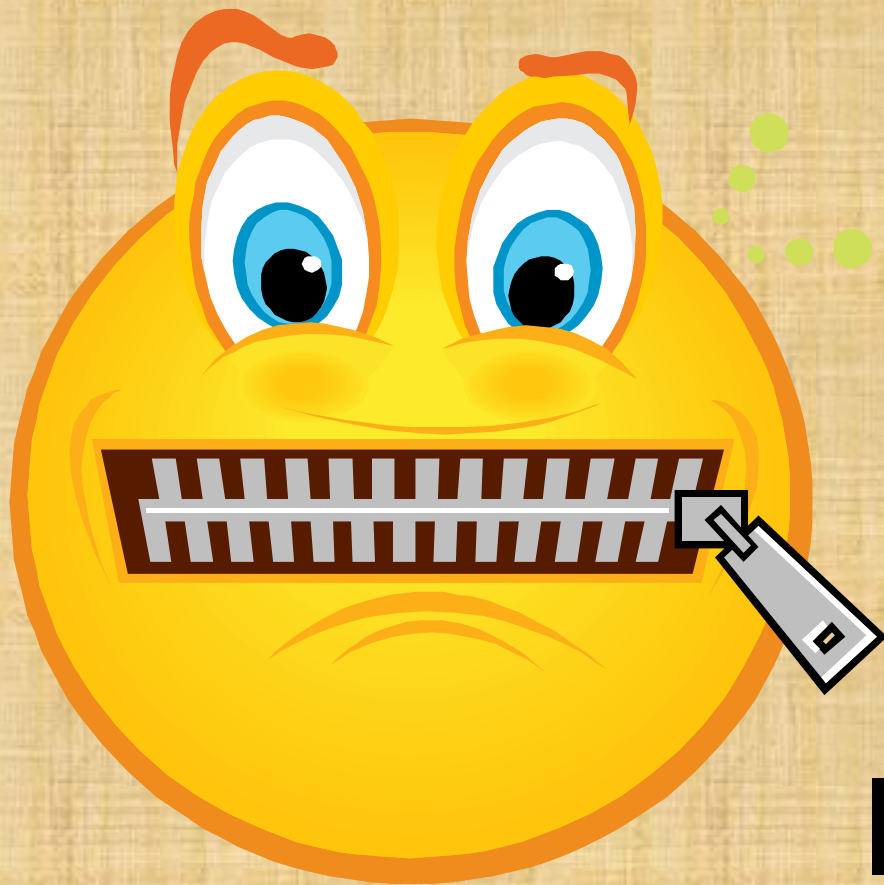
C) Do not use information





Great
Job!

[Click here to go to the next slide.](#)



OPPS!
TRY
AGAIN!!!

[Click here to go back.](#)

Output devices

- Output devices are computer parts that send out information to you.



A monitor is an output device.

- A monitor shows you what the processor is doing on the screen.



Speakers are output devices

- Speakers let you hear sounds that are played on a computer.
- Sounds are a source of information. So speakers therefore send out information.



Printers are output devices.

- Printers copy information that is stored on the computer and puts them on them on paper.

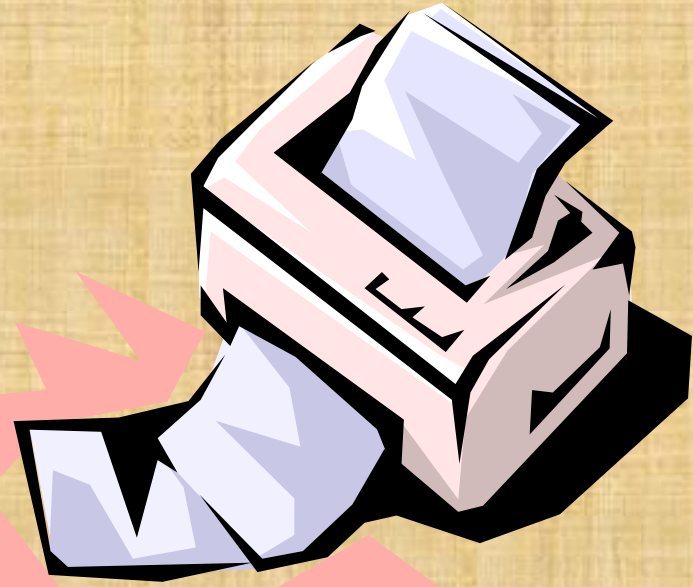
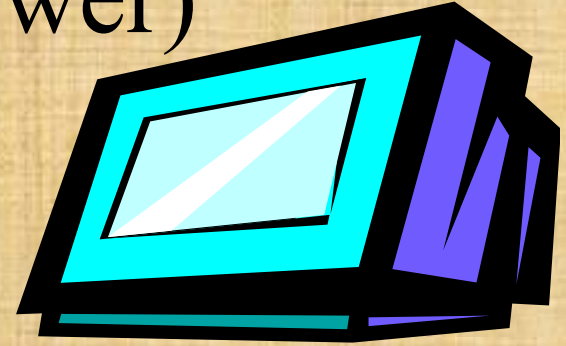


Monitors ,Speakers and Printers are...(click answer)

Input Devices

Output Devices

Funny Devices





Great
Job!

[Click here to go to the next slide.](#)



OPPS!
TRY
AGAIN!!!

[Click here to go back](#)

Now let's play some review games on these devices!

- Click on the link below!
- <http://www.quia.com/jg/1170258.html>